



Section E — Thermoplastic Fittings

TrueSeal™ E2-18

Fast & Tite® E19-25

Par-Barb E26-30

Mini-Barb E31-44

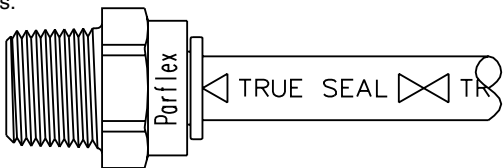
E

 Contact Parflex for current price and delivery information on shaded parts.



TrueSeal™ Thermoplastic Push-In Fittings

The patented* TrueSeal push-to-connect thermoplastic fittings are light weight, reusable, and connect to plastic tubing without the use of tools.



Features

- All components in TrueSeal fittings are manufactured from FDA compliant materials and are NSF-51 listed for contact with food and potable water.
- All-plastic body designs offer reduced weight, eliminate rust, corrosion, and system contamination in applications where metal components cannot be tolerated.
- Collets are offered in either a patented all-plastic design for use with flexible tubing or with a metal grip edge made from 300 series stainless steel for use on all tubing including copper. Connections made with metal gripper collets and tube stem adapters are not reusable.
- Extra deep tube seat in fitting body provides support to reduce side-load leakage.
- Elastomer o-ring seal provides positive compression on tubing O.D. in vacuum or pressure applications.
- Removable collet design permits o-ring replacement in the field. Collets are available in colors for easy color coding of systems.
- Tube stem adapters provide a wide range of tube-to-port jump size potential and allow elbows and tees to swivel for positive tube routing alignment.

Applications

TrueSeal fittings find wide acceptance in water conditioning, filtration, and reverse osmosis industries and on water, soft drink, beer, wine, and condiment dispensing equipment. Industrial applications range from vacuum to low-pressure hydraulic and pneumatic systems on robotics, air logic, packaging/filling equipment, and conveyors. Ink and dye transfer, lubrication and cooling lines on presses, machine tools, ion implanting devices—all rely on TrueSeal.

Standard Materials

Material	Fitting Color	O-Ring
Acetal	Gray	Nitrile
Polypropylene	White	EPDM
Kynar®	Natural	Viton

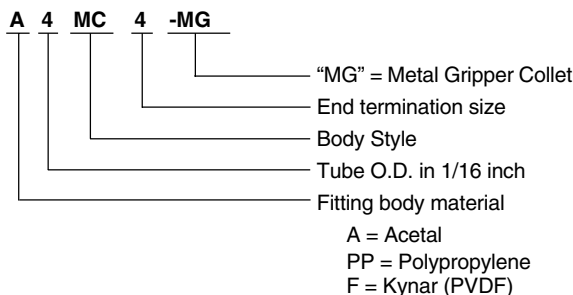
Colored collets are also available in black, white, red, blue, green, yellow, and orange. [Consult division.](#)

KYNAR® is a registered trademark of Atochem North America, Inc.

*U.S. Patent 5,584,513

Note: Provide adequate fail-safe mechanisms such as leakage detection sensors, automatic shut-off controls or other industry and code appropriate fail-safe devices in the design of your water-handling appliance to protect against personal injury and property damage. Plastic fittings containing an o-ring that are used in water applications should be replaced at least every five years or more frequently depending on the environment and severity of the application.

How to Order



Working Pressure

TrueSeal fittings are rated for the pressures listed below or at 1/4 (one-fourth) of the rated burst pressure of the tubing being used (whichever is less). One-half inch fittings with metal gripper collets are rated at 3.3:1 burst safety factor.

Fitting Size	Acetal	Polypropylene	Kynar®
1/4"	300	150	300
5/16"	300		
3/8"	300	150	300
1/2"	250		
Temp. Range	-20°F (-29°C) to +180°F (85°C)	0°F (-18°C) to +225°F (110°C)	0°F (-18°C) to +275°F (135°C)

These pressure ratings are based on tests conducted with Series NR tubing at 73°F. Actual working pressures may be lower at elevated temperatures. [Consult division.](#)

Tubing

TrueSeal fittings with all plastic collets can be used with the following tubing materials: polyethylene, polypropylene, nylon, Teflon, and polyurethane (3/8" and 1/2" polyurethane should use tube supports). TrueSeal fittings with metal gripper collets can be used with tubing listed above and soft copper tubing. [For stainless steel or glass tubing or all other metal tubing, consult factory.](#)

Tube Sizes	O.D. Tolerance	Insertion Depth
1/4"	±.005"	11/16"
5/16"	±.005"	13/16"
3/8"	±.005"	3/4"
1/2"	±.005"	7/8"

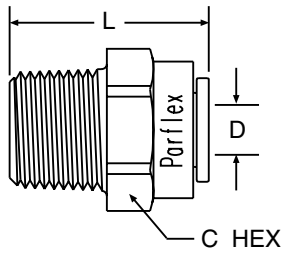
Assembly Instructions

1. Cut tubing square and clean. ([Use a Parker plastic tube cutter, Part No. PTC.](#))
2. Mark from end of tube the length of insertion (see table above).
3. Push tube into the fitting until it bottoms out.
4. To remove, depress collet and pull tubing out.
5. Use Parflex TrueSealant (Part No. PTS) on threads.



MC - Male Connector

Tube-to-Pipe

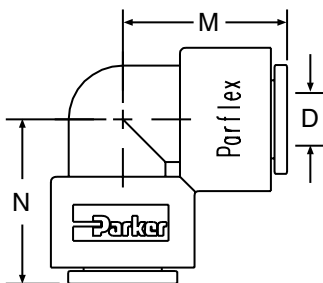


Gray Acetal Nitrile Seal	White Polypropylene EPDM Seal	Natural Kynar Viton Seal	Nom. Tube O.D.	NPTF Thread Size	C Hex	L Overall Length	D Thru Hole Min.
#	#	#					
A4MC2-MG	PP4MC2	F4MC2	1/4	1/8	11/16	1.28	.175
A4MC4-MG	PP4MC4	F4MC4	1/4	1/4	11/16	1.14	.175
A4MC6-MG	PP4MC6	F4MC6	1/4	3/8	11/16	1.18	.175
A5MC2-MG			5/16	1/8	13/16	1.46	.175
A5MC4-MG			5/16	1/4	13/16	1.41	.188
A5MC6-MG			5/16	3/8	13/16	1.27	.188
A6MC2-MG		F6MC2	3/8	1/8	13/16	1.46	.175
A6MC4-MG	PP6MC4	F6MC4	3/8	1/4	13/16	1.41	.250
A6MC6-MG	PP6MC6	F6MC6	3/8	3/8	13/16	1.27	.250
A6MC8-MG		F6MC8	3/8	1/2	15/16	1.45	.250
A8MC6-MG			1/2	3/8	15/16	1.65	.360
A8MC8-MG			1/2	1/2	15/16	1.46	.375

For nonstandard plastic collet, remove -MG suffix.

EU - Elbow Union

Tube-to-Tube



Gray Acetal Nitrile Seal	White Polypropylene EPDM Seal	Natural Kynar Viton Seal	Nom. Tube O.D.	M	N	D Thru Hole Min.
#	#	#				
A4EU4-MG	PP4EU4	F4EU4	1/4	0.87	0.87	.175
A5EU4-MG			5/16-1/4	1.02	0.90	.175
A5EU5-MG			5/16	1.02	1.02	.188
A6EU4-MG	PP6EU4	F6EU4	3/8-1/4	1.02	0.90	.212
A6EU5-MG			3/8-5/16	1.02	1.02	.175
A6EU6-MG	PP6EU6	F6EU6	3/8	1.02	1.02	.250
A8EU6-MG			1/2-3/8	1.20	1.20	.250
A8EU8-MG			1/2	1.20	1.20	.375

For nonstandard plastic collet, remove -MG suffix.

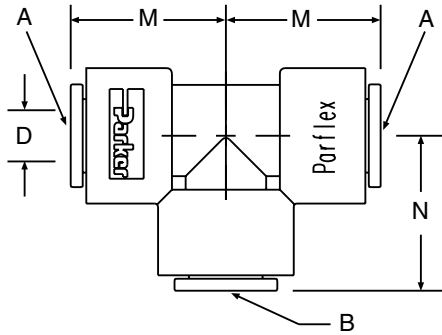
All sizes in inches.

E



TU - Tee Union

Tube-to-Tube

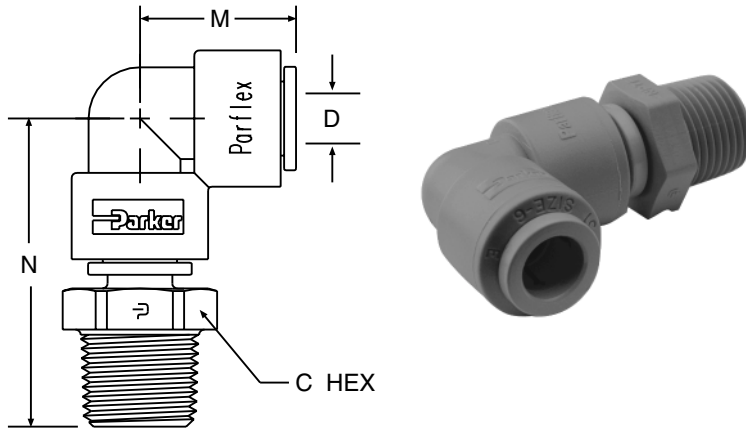


	Gray Acetal Nitrile Seal	White Polypropylene EPDM Seal	Natural Kynar Viton Seal	Nom. Tube O.D.		M	N	D Thru Hole Min.
				Tube A Run	Tube B Stem			
#	#	#	⊙	⊙				
A4TU4-MG	PP4TU4	F4TU4	1/4	1/4	0.81	0.85	.175	
A5TU5-MG			5/16	5/16	1.02	1.02	.188	
A6TU4-MG	PP6TU4	F6TU4	3/8	1/4	1.02	1.03	.175	
A6TU6-MG	PP6TU6	F6TU6	3/8	3/8	1.02	1.02	.290	
A8TU8-MG			1/2	1/2	1.20	1.20	.375	

For nonstandard plastic collet, remove -MG suffix.

All sizes in inches.

MES - Male Elbow Swivel Tube-to-Pipe



E

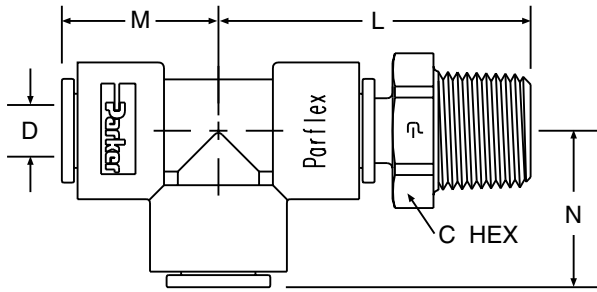
Gray Acetal Nitrile Seal	White Polypropylene EPDM Seal	Natural Kynar Viton Seal	Nom. Tube O.D.	NPTF Thread Size	C Hex	M	N	D Thru Hole Min.
#	#	#						
A4MES2-MG	PP4MES2	F4MES2	1/4	1/8	9/16	0.87	1.60	.175
A4MES4-MG	PP4MES4	F4MES4	1/4	1/4	11/16	0.87	1.71	.175
A4MES6-MG	PP4MES6	F4MES6	1/4	3/8	13/16	0.90	1.91	.212
A5MES2-MG			5/16	1/8	9/16	1.02	1.78	.188
A5MES4-MG			5/16	1/4	11/16	1.02	1.90	.188
A5MES6-MG			5/16	3/8	13/16	1.02	1.90	.188
A6MES2-MG		F6MES2	3/8	1/8	9/16	1.02	1.65	.175
A6MES4-MG	PP6MES4	F6MES4	3/8	1/4	13/16	1.02	1.90	.250
A6MES6-MG	PP6MES6	F6MES6	3/8	3/8	13/16	1.02	1.90	.250
A8MES4-MG			1/2	1/4	13/16	1.20	2.10	.240
A8MES6-MG			1/2	3/8	13/16	1.20	2.10	.375
A8MES8-MG			1/2	1/2	1	1.20	2.32	.375

*Part consists of elbow union and tube stem adaptor.
Note: Assemblies with metal gripper collets are permanent.
Assemblies with plastic collets can be taken apart.

All sizes in inches.



MRS - Male Run Swivel Tube-to-Pipe



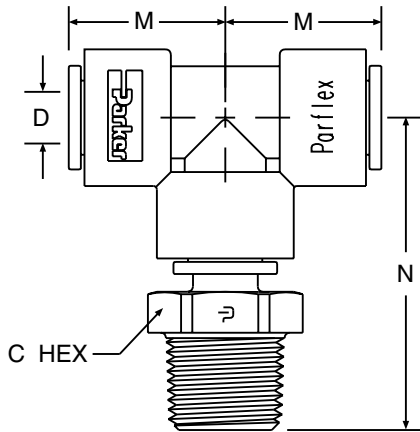
Gray Acetal Nitrile Seal	White Polypropylene EPDM Seal	Natural Kynar Viton Seal	Nom. Tube O.D.	NPTF Thread Size	C Hex	L	M	N	D Thru Hole Min.
#	#	#							
A4MRS2-MG	PP4MRS2	F4MRS2	1/4	1/8	9/16	1.55	0.81	0.85	.175
A4MRS4-MG	PP4MRS4	F4MRS4	1/4	1/4	11/16	1.67	0.81	0.85	.175
A5MRS2-MG			5/16	1/8	9/16	1.78	1.02	1.02	.188
A5MRS4-MG			5/16	1/4	11/16	1.90	1.02	1.02	.188
A5MRS6-MG			5/16	3/8	13/16	1.90	1.02	1.02	.188
A6MRS4-MG	PP6MRS4	F6MRS4	3/8	1/4	13/16	1.90	1.02	1.02	.250
A6MRS6-MG	PP6MRS6	F6MRS6	3/8	3/8	13/16	1.90	1.02	1.02	.250
A8MRS4-MG			1/2	1/4	13/16	2.10	1.20	1.20	.240
A8MRS6-MG			1/2	3/8	13/16	2.10	1.20	1.20	.375
A8MRS8-MG			1/2	1/2	1	2.32	1.20	1.20	.375

*Part consists of tee union and tube stem adaptor.
Note: Assemblies with metal gripper collets are permanent.
Assemblies with plastic collets can be taken apart.

All sizes in inches.



MTS - Male Tee Swivel Tube-to-Pipe

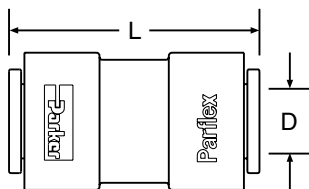


E

Gray Acetal Nitrile Seal	White Polypropylene EPDM Seal	Natural Kynar Viton Seal	Nom. Tube O.D.	NPTF Thread Size	C Hex	M	N	D Thru Hole Min.
#	#	#						
A4MTS2-MG	PP4MTS2	F4MTS2	1/4	1/8	9/16	0.81	1.60	.175
A4MTS4-MG	PP4MTS4	F4MTS4	1/4	1/4	11/16	0.81	1.71	.175
A5MTS2-MG			5/16	1/8	9/16	1.02	1.78	.188
A5MTS4-MG			5/16	1/4	11/16	1.02	1.90	.188
A5MTS6-MG			5/16	3/8	13/16	1.02	1.90	.188
A6MTS2-MG		F6MTS2	3/8	1/8	9/16	1.02	1.75	.175
A6MTS4-MG	PP6MTS4	F6MTS4	3/8	1/4	13/16	1.02	1.90	.250
A6MTS6-MG	PP6MTS6	F6MTS6	3/8	3/8	13/16	1.02	1.90	.250
A8MTS4-MG			1/2	1/4	13/16	1.20	2.10	.240
A8MTS6-MG			1/2	3/8	13/16	1.20	2.10	.375
A8MTS8-MG			1/2	1/2	1	1.20	2.32	.375

*Part consists of tee union and tube stem adaptor.
Note: Assemblies with metal gripper collets are permanent.
Assemblies with plastic collets can be taken apart.

UC - Union Connector Tube-to-Tube



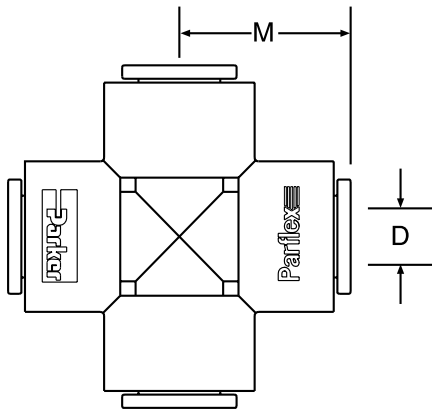
Gray Acetal Nitrile Seal	White Polypropylene EPDM Seal	Natural Kynar Viton Seal	Nom. Tube O.D.	L Overall Length	D Thru Hole Min.
#	#	#			
A4UC4-MG	PP4UC4	F4UC4	1/4	1.49	.175
A5UC4-MG			5/16-1/4	1.70	.175
A5UC5-MG			5/16	1.70	.188
A6UC4-MG	PP6UC4	F6UC4	3/8-1/4	1.70	.175
A6UC5-MG			3/8-5/16	1.70	.188
A6UC6-MG	PP6UC6	F6UC6	3/8	1.70	.250
A8UC5-MG			1/2-5/16	1.90	.188
A8UC6-MG			1/2-3/8	1.90	.250
A8UC8-MG			1/2	1.91	.375

All sizes in inches.

For nonstandard plastic collet, remove -MG suffix.



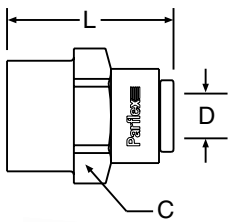
CU - Cross Union Tube-to-Tube



Gray Acetal Nitrile Seal	White Polypropylene EPDM Seal	Natural Kynar Viton Seal	Nom. Tube O.D.	L Overall Length	D Thru Hole Min.
#	#	#			
A4CU4-MG			1/4	.91	.175
A6CU6-MG			3/8	1.08	.250

For nonstandard plastic collet, remove -MG suffix.

FA - Faucet Adapter Tube-to-Faucet



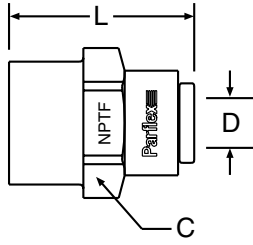
Gray Acetal Nitrile Seal	White Polypropylene EPDM Seal	Natural Kynar Viton Seal	Nom. Tube O.D.	UNS-2B Thread Size	C Hex	L Overall Length	D Thru Hole Min.
#	#	#					
A4FA7-MG	PP4FA7	F4FA7	1/4	7/16-24	23/32	1.32	.190
A5FA7-MG			5/16	7/16-24	13/16	1.41	.190
A6FA7-MG	PP6FA7	F6FA7	3/8	7/16-24	13/16	1.41	.190

For nonstandard plastic collet, remove -MG suffix.

All sizes in inches.

FC - Female Connector

Tube-to-Pipe

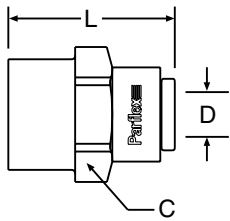


Gray Acetal Nitrile Seal	White Polypropylene EPDM Seal	Natural Kynar Viton Seal	Nom. Tube O.D.	NPTF Thread Size	C Hex	L Overall Length	D Thru Hole Min.
#	#	#					
A4FC2-MG	PP4FC2	F4FC2	1/4	1/8	11/16	1.20	.175
A4FC4-MG	PP4FC4	F4FC4	1/4	1/4	23/32	1.32	.175
A5FC4-MG			5/16	1/4	13/16	1.41	.188
A5FC6-MG			5/16	3/8	1	1.50	.188
A6FC4-MG	PP6FC4	F6FC4	3/8	1/4	13/16	1.41	.250
A6FC6-MG	PP6FC6	F6FC6	3/8	3/8	1	1.50	.250
A6FC8-MG			3/8	1/2	1-1/8	1.52	.250
A8FC6-MG			1/2	3/8	1-1/8	1.60	.375
A8FC8-MG			1/2	1/2	1-1/8	1.75	.375

For nonstandard plastic collet, remove -MG suffix.

FF - 45° Female Flare

Tube-to-Flare



Gray Acetal Nitrile Seal	White Polypropylene EPDM Seal	Natural Kynar Viton Seal	Nom. Tube O.D.	UNF-2B Thread Size	C Hex	L Overall Length	D Thru Hole Min.
#	#	#					
A4FF4-MG	PP4FF4	F4FF4	1/4	7/16-20	23/32	1.32	.190
A6FF4-MG		F6FF4	3/8	7/16-20	13/16	1.41	.190
A6FF6-MG	PP6FF6	F6FF6	3/8	5/8-18	1	1.50	.250

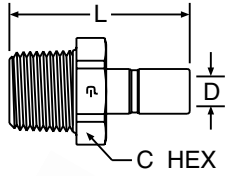
For nonstandard plastic collet, remove -MG suffix.

All sizes in inches.



TMC - Tube Stem Adapter

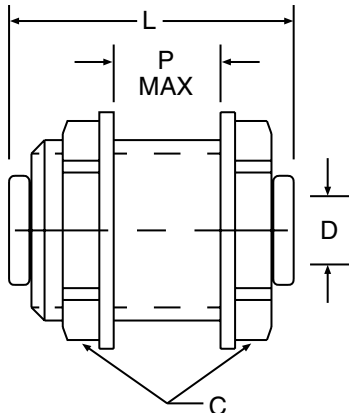
Tube Stem-to-Pipe



Gray Acetal	White Polypropylene	Natural Kynar	Tube Stem O.D.	NPTF Thread Size	C Hex	L Overall Length	D Thru Hole Min.
#	#	#					
A4TMC2	PP4TMC2	F4TMC2	1/4	1/8	9/16	1.44	.175
A4TMC4	PP4TMC4	F4TMC4	1/4	1/4	11/16	1.56	.175
A5TMC2			5/16	1/8	9/16	1.55	.188
A5TMC4			5/16	1/4	11/16	1.67	.188
A5TMC6			5/16	3/8	13/16	1.67	.188
A6TMC4	PP6TMC4	F6TMC4	3/8	1/4	13/16	1.70	.250
A6TMC6	PP6TMC6	F6TMC6	3/8	3/8	13/16	1.70	.250
A8TMC4			1/2	1/4	13/16	1.82	.240
A8TMC6			1/2	3/8	13/16	1.82	.375
A8TMC8			1/2	1/2	1	2.04	.375

BU - Bulkhead Union

Tube-to-Tube



Gray Acetal Nitrile Seal	White Polypropylene EPDM Seal	Natural Kynar Viton Seal	Nom. Tube O.D.	C Hex	L Overall Length	P Max. Wall Thk.	D Thru Hole Min.	Bulkhead Hole Drill Size
#	#	#						
A4BU4-MG	PP4BU4	F4BU4	1/4	15/16	1.50	.50	.175	7/8
A5BU5-MG			5/16	1-1/16	1.75	.62	.188	1
A6BU4-MG	PP6BU4		3/8-1/4	1-1/16	1.75	.62	.175	1
A6BU6-MG	PP6BU6	F6BU6	3/8	1-1/16	1.75	.62	.250	1
A8BU8-MG			1/2	1-1/4	2.04	.70	.375	1-1/8

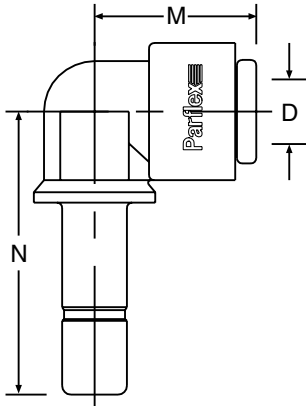
For nonstandard plastic collet, remove -MG suffix.

All sizes in inches.



TEU - Tube Elbow Union

Tube-to-Tube Stem



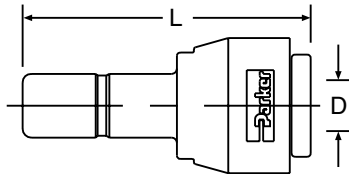
Gray Acetal Nitrile Seal	White Polypropylene EPDM Seal	Natural Kynar Viton Seal	Nom. Tube O.D.	Tube Stem O.D.	M	N	D Thru Hole Min.
#	#	#					
A4TEU4-MG	PP4TEU4	F4TEU4	1/4	1/4	.84	1.21	.125
A4TEU6-MG		F4TEU6	1/4	3/8	.84	1.35	.125
A5TEU5-MG			5/16	5/16	1.03	1.40	.188
A6TEU4-MG		F6TEU4	3/8	1/4	1.03	1.29	.125
A6TEU6-MG	PP6TEU6	F6TEU6	3/8	3/8	1.03	1.64	.250

For nonstandard plastic collet, remove -MG suffix.



RD - Tube Reducer

Tube-to-Tube Stem



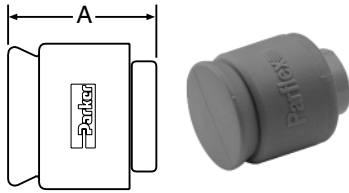
Gray Acetal Nitrile Seal	White Polypropylene EPDM Seal	Natural Kynar Viton Seal	Nom. Tube O.D.	Stem O.D.	L	D Thru Hole Min.
#	#	#				
A4RD5-MG	PP4RD5		1/4	5/16	1.62	.18
A4RD6-MG	PP4RD6		1/4	3/8	1.65	.18
A5RD6-MG			5/16	3/8	1.78	.25
A5RD8-MG			5/16	1/2	1.90	.25
A6RD8-MG			3/8	1/2	1.90	.25

For nonstandard plastic collet, remove -MG suffix.



All sizes in inches.

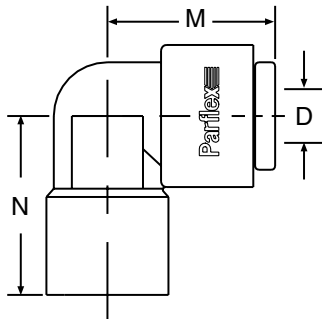
CAP - Tube Cap



Gray Acetal Nitrile Seal	White Polypropylene EPDM Seal	Natural Kynar Viton Seal	Nom. Tube O.D.	L Overall Length
#	#	#		
A4CAP-MG	PP4CAP	F4CAP	1/4	0.77
A6CAP-MG	PP6CAP		3/8	.88

For nonstandard plastic collet, remove -MG suffix.

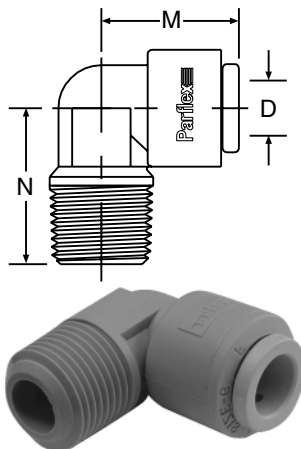
FE - Female Elbow Tube-to-Tube



Gray Acetal Nitrile Seal	White Polypropylene EPDM Seal	Natural Kynar Viton Seal	Nom. Tube O. D.	NPTF Thread Size	M	N	D Thru Hole Min.
#	#	#					
A4FE4-MG			1/4	1/4	.84	1.00	.18
A6FE4-MG			3/8	1/4	1.03	1.00	.25
A6FE6-MG			3/8	3/8	1.03	1.00	.25

For nonstandard plastic collet, remove -MG suffix.

ME - Male Elbow Tube-to-Pipe



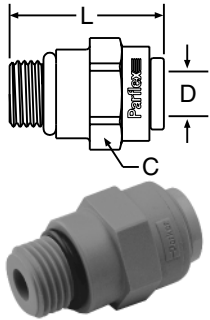
Gray Acetal Nitrile Seal	White Polypropylene EPDM Seal	Natural Kynar Viton Seal	Nom. Tube O.D.	NPTF Thread Size	M	N	D Thru Hole Min.
#	#	#					
A4ME2-MG	PP4ME2	F4ME2	1/4	1/8	0.84	0.94	.175
A4ME4-MG	PP4ME4	F4ME4	1/4	1/4	0.84	0.94	.175
A4ME6-MG	PP4ME6	F4ME6	1/4	3/8	0.84	1.04	.175
A5ME4-MG			5/16	1/4	1.03	1.08	.175
A5ME6-MG			5/16	3/8	1.03	1.06	.188
A6ME4-MG	PP6ME4	F6ME4	3/8	1/4	1.03	1.08	.250
A6ME6-MG	PP6ME6	F6ME6	3/8	3/8	1.03	1.06	.250

For nonstandard plastic collet, remove -MG suffix.

All sizes in inches.



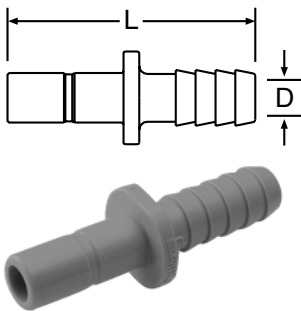
ST - Straight Thread Tube-to-Male O-Ring Boss



Gray Acetal Nitrile Seal	White Polypropylene EPDM Seal	Natural Kynar Viton Seal	Nom. Tube O.D.	UNF-2A Thread Size	C Hex	L Overall Length	D Thru Hole Min.
#	#	#					
A6ST9-MG		F6ST9	3/8	9/16—18	9/16	1.39	.250

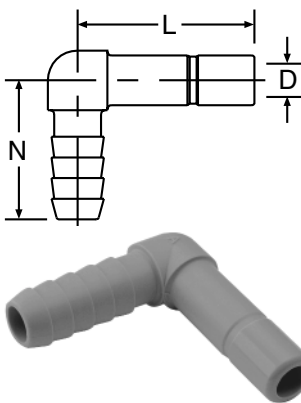
For nonstandard plastic collet, remove -MG suffix.

TCB - Tube-to-Barb Connector



Gray Acetal	White Polypropylene	Natural Kynar	Tube Stem O.D.	Tube I.D.	L Overall Length	D Thru Hole Min.
#	#	#				
A4TCB4	PP4TCB4	F4TCB4	1/4	1/4	1.67	.140
A6TCB4		F6TCB4	3/8	1/4	1.82	.140
A6TCB6	PP6TCB6	F6TCB6	3/8	3/8	1.98	.250
A8TCB6			1/2	3/8	2.10	.250
A8TCB8			1/2	1/2	2.10	.375

TEB - Tube Elbow Barb Connector

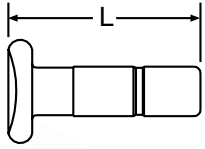


Gray Acetal	White Polypropylene	Natural Kynar	Tube Stem O.D.	Tube I.D.	L	N	D Thru Hole Min.
#	#	#					
A4TEB4	PP4TEB4	F4TEB4	1/4	1/4	0.89	1.00	.140
A6TEB6	PP6TEB6	F6TEB6	3/8	3/8	1.34	1.21	.250
A8TEB8			1/2	1/2	1.30	1.30	.390

All sizes in inches.



TPL - Plug

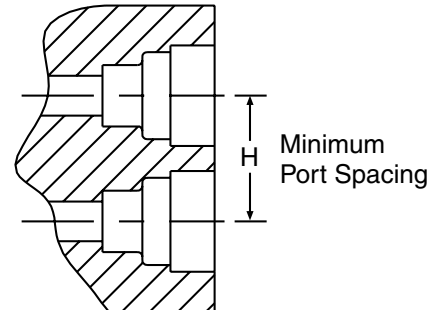
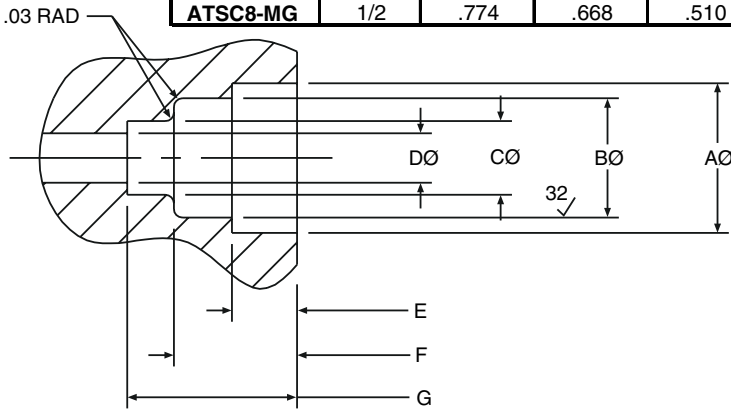


Gray Acetal	White Polypropylene	Natural Kynar	Fitting Size	L Overall Length
#	#	#		
A4TPL	PP4TPL	F4TPL	1/4	0.88
A6TPL	PP6TPL	F6TPL	3/8	1.45
A8TPL			1/2	1.50

TSC - Cartridge Insert



Part Number with Nitrile Seal	Nom. Tube O.D.	A* Diameter ±.002	B Diameter ±.002	C Diameter ±.002	D Diameter ±.002	E Depth ±.002	F Depth ±.002	G Depth ±.002	H* Centerline of Ports ±.002
#									
ATSC4-MG	1/4	.528	.421	.260	.175	.230	.435	.600	.670
ATSC6-MG	3/8	.632	.545	.385	.250	.280	.455	.705	.790
ATSC8-MG	1/2	.774	.668	.510	.375	.315	.510	.810	1.250



Parker TrueSeal™ Cartridge Inserts:

Allow you to machine or mold a tube connection into your equipment or components. By using cartridge inserts, you will reduce your material and assembly costs, reduce potential leak paths, and give your equipment a new, clean profile by eliminating the need for threaded connections. Part number ATSC4 consists of 1 o-ring, 1 cartridge, and 1 collet.

*Cartridge inserts are rated at 300 psi. Test results are measured using Noryl® as the receiving material. Other materials may produce different results. Consult the Parflex Division for required dimensions when using filled and unfilled polypropylene, Abs, and nylon.

Assembly Instructions:

- Step 1**—Machine or mold the receiving orifice as per the above dimensions.
- Step 2**—Place the cartridge insert squarely onto the prepared port opening making sure that the barbs of the cartridge are going into the hole and the lettering on the face of the cartridge is visible.
- Step 3**—Using a rubber mallet or press, insert the cartridge into the first gland orifice until its face is flush with the top surface of the port.
- Step 4**—Insert the o-ring into the cartridge and seat it evenly into the second gland orifice.
- Step 5**—Insert the collet into the cartridge opening.
- Step 6**—Insert tubing.

NORYL® is a registered trademark of the General Electric Co.

All sizes in inches.



Polypropylene Ball Valves

For proven leak-free performance, specify **Parflex® Polypropylene Ball Valves**. Their corrosion-resistant, all-plastic design makes them ideal for water filtration units, coffee and beverage machines and a wide variety of other fluid applications. Polypropylene material meets all FDA and NSF 51 requirements for food contact and potable water.

Features/Benefits:

- Precision molded, all-plastic design is leak free and corrosion resistant.
- Polypropylene material offers a wider chemical acceptance range, as well as a wide temperature range.
- Bi-directional flow maximizes productivity.
- Full flow design reduces pressure drop across the valve.
- Special o-ring seal ensures a reliable leak-tight connection.
- TrueSeal™ connection reduces potential leaks.

Specifications:

- Temperature range: 0°F to 225°F.
- O-ring seal material: Nitrile.
- NSF 51 listed.
- Pressure rated to 150 psi with a 600 psi burst pressure.

Advantages:

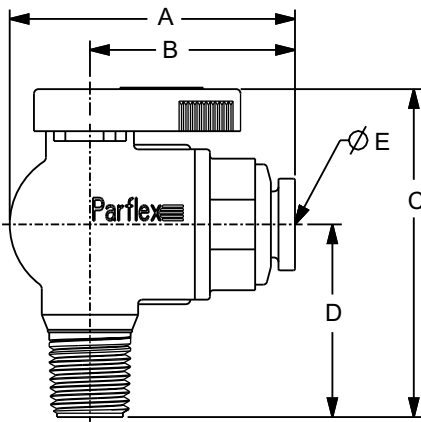
- Reduce costs—Built-in TrueSeal™ connection eliminates the need for a secondary fitting.
- Save space—Low-profile design allows for easy assembly and access where space is at a premium.

Assembly Instructions:

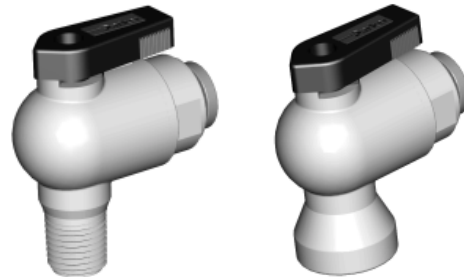
1. Inspect the mating threads for debris or damage. Remove any old Teflon tape or sealant on previously used threads. If threads are damaged, replace with new adapter before proceeding.
2. Apply 2 to 3 wraps of Teflon tape, Parker TrueSealant or an NSF/FDA approved silicon sealant. Do not use Plumbers Putty or Pipe Dope. These chemically react with plastic materials and could cause a failure.
3. Align ball valve to mating thread to ensure cross threading does not occur.
4. Screw ball valve onto mating thread 3 to 5 turns. This should be sufficient to properly seal the threads.
5. Pressurize system and check for leaks.



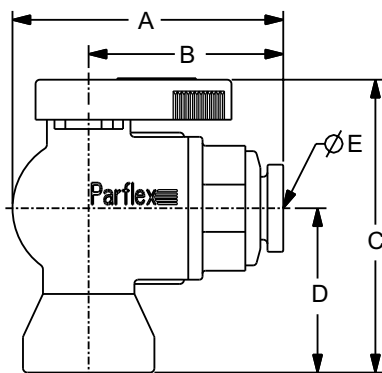
VME - Valve Male Elbow



Part No.	Nom. Tube O.D.	NPTF Thread Size	A	B	C	D	øE Min. Thru Hole
#							
PP4VME2-MG	1/4	1/8	1.74	1.21	2.00	1.10	.19
PP4VME4-MG	1/4	1/4	1.74	1.21	2.18	1.28	.19
PP4VME6-MG	1/4	3/8	1.74	1.21	2.18	1.28	.19
PP4VME8-MG	1/4	1/2	1.74	1.21	2.37	1.47	.19
PP6VME2-MG	3/8	1/8	1.85	1.32	2.00	1.10	.25
PP6VME4-MG	3/8	1/4	1.85	1.32	2.18	1.28	.25
PP6VME6-MG	3/8	3/8	1.85	1.32	2.18	1.28	.25
PP6VME8-MG	3/8	1/2	1.85	1.32	2.37	1.47	.25



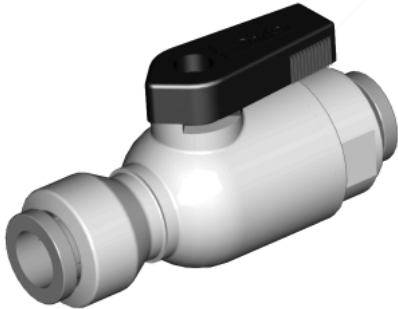
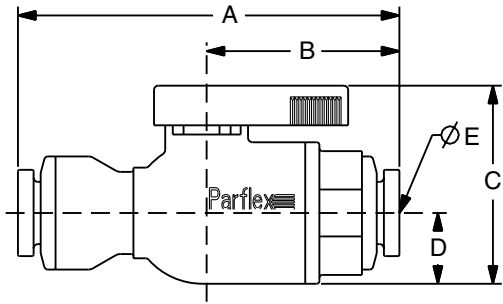
VFE - Valve Female Elbow



Part No.	Nom. Tube O.D.	NPTF Thread Size	A	B	C	D	øE Min. Thru Hole
#							
PP4VFE2-MG	1/4	1/8	1.74	1.21	1.82	0.92	.19
PP4VFE4-MG	1/4	1/4	1.74	1.21	2.05	1.15	.19
PP4VFE6-MG	1/4	3/8	1.74	1.21	2.18	1.28	.19
PP6VFE2-MG	3/8	1/8	1.85	1.32	1.82	0.92	.25
PP6VFE4-MG	3/8	1/4	1.85	1.32	2.05	1.15	.25
PP6VFE6-MG	3/8	3/8	1.85	1.32	2.18	1.28	.25

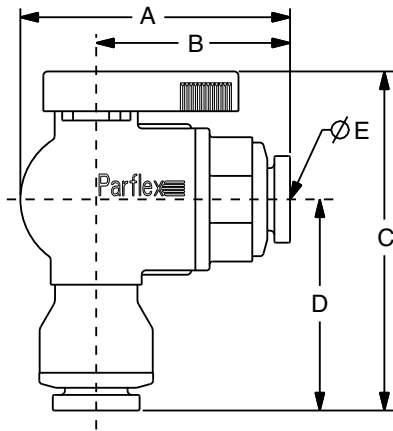


VUC - Valve Union Connector



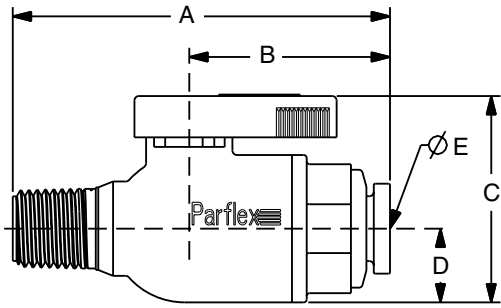
Part No.	Tube Size	Tube Size	A	B	C	D	øE Min. Thru Hole
#							
PP4VUC4-MG	1/4	1/4	2.51	1.21	1.4	0.5	.19
PP4VUC6-MG	1/4	3/8	2.62	1.21	1.4	0.5	.19
PP6VUC4-MG	3/8	1/4	2.56	1.32	1.4	0.5	.19
PP6VUC6-MG	3/8	3/8	2.67	1.32	1.4	0.5	.25

VEU - Valve Elbow Union



Part No.	Tube Size	Tube Size	A	B	C	D	øE Min. Thru Hole
#							
PP4VEU4-MG	1/4	1/4	1.74	1.21	2.29	1.39	.19
PP4VEU6-MG	1/4	3/8	1.74	1.21	2.34	1.44	.11
PP6VEU4-MG	3/8	1/4	1.85	1.32	2.29	1.39	.19
PP6VEU6-MG	3/8	3/8	1.85	1.32	2.34	1.44	.25

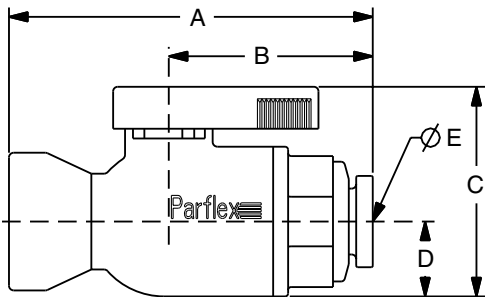
VMC - Valve Male Connector



Part No.	Tube Size	NPTF Thread Size	A	B	C	D	øE Min. Thru Hole
#							
PP4VMC2-MG	1/4	1/8	2.22	1.21	1.4	0.5	.19
PP4VMC4-MG	1/4	1/4	2.40	1.21	1.4	0.5	.19
PP4VMC6-MG	1/4	3/8	2.40	1.21	1.4	0.5	.19
PP4VMC8-MG	1/4	1/2	2.59	1.21	1.4	0.5	.19
PP6VMC2-MG	3/8	1/8	2.33	1.32	1.4	0.5	.25
PP6VMC4-MG	3/8	1/4	2.51	1.32	1.4	0.5	.25
PP6VMC6-MG	3/8	3/8	2.51	1.32	1.4	0.5	.25
PP6VMC8-MG	3/8	1/2	2.70	1.32	1.4	0.5	.25

E

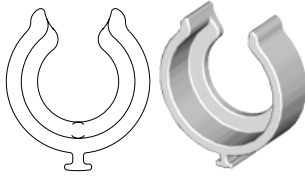
VFC - Valve Female Connector



Part No.	Tube Size	NPTF Thread Size	A	B	C	D	øE Min. Thru Hole
#							
PP4VFC2-MG	1/4	1/8	2.04	1.21	1.4	0.5	.19
PP4VFC4-MG	1/4	1/4	2.27	1.21	1.4	0.5	.19
PP4VFC6-MG	1/4	3/8	2.40	1.21	1.4	0.5	.19
PP6VFC2-MG	3/8	1/8	2.15	1.32	1.4	0.5	.25
PP6VFC4-MG	3/8	1/4	2.38	1.32	1.4	0.5	.25
PP6VFC6-MG	3/8	3/8	2.51	1.32	1.4	0.5	.25



SC - Safety Clip (Patent Pending)



Standard color is black or blue.
Other colors available upon request.

Part Number	Part Number	For Nominal Tube O.D.
#	#	
SC-4	SC-4-B	1/4
SC-5	SC-5-B	5/16
SC-6	SC-6-B	3/8
SC-8	SC-8-B	1/2

TS - Tube Supports



To be used with soft durometer tubing.

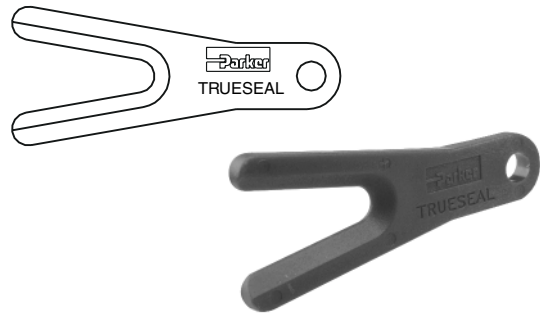
Nylon Part Number	Polypropylene Part Number
#	#
N4TS3	P4TS3
N5TS3	P5TS3
N6TS4	P6TS4
N8TS6	P8TS6

PTS - Pipe Thread Sealant



NSF-51 listed silicone.

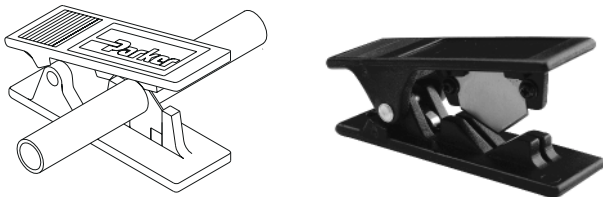
AQRT - Quick Release Tool



Makes disconnection of tube adapters and tubing a breeze.

PTC - Plastic Tube Cutter

PTC-001-RB



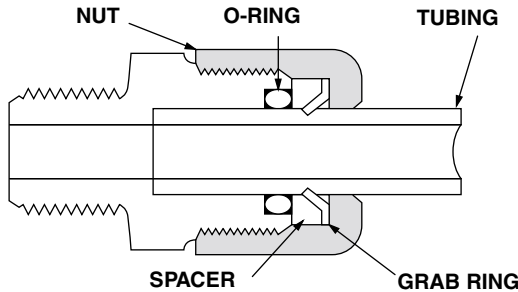
Plastic tube cutter and replacement blades.

All sizes in inches.



Fast & Tite Thermoplastic Fittings

Fast & Tite fittings are the most complete line of plastic fittings for thermoplastic tubing in the industry.



Fast & Tite thermoplastic tube fittings from Parker will prove to be the answer to your tubing connector needs. Patented Fast & Tite fittings install in seconds without tools and provide a tight, sure, leak proof seal without clamps or adjustments. A unique 302 stainless steel grab ring, for tube retention, coupled with a Nitrile O-Ring for positive seal, assures good tube connection with only hand tight assembly. A plastic grab ring is also available upon special request. Vibration or tube movement will not break the seal and cause leakage. Preassembled in either highly inert polypropylene, or strong, durable nylon, Fast & Tite fittings are the answer to full flow thermoplastic tubing system requirements.

When necessary, Fast & Tite fittings can be disassembled by hand for fast system drainage. Fittings are completely reusable. Parts are

easily replaced. O-Rings are standard size and universally available. (For applications requiring other than Nitrile O-Rings, consult your Fast & Tite distributor.)

Use Fast & Tite fittings with Parker Parflex tubing or other plastic, glass or metal tubing for low pressure or vacuum lines up to the pressure limits shown below.

All ingredients in Fast & Tite fittings meet FDA and NSF requirements for food contact and potable water.

Working Pressures for Fast & Tite Fittings

Tube O. D., in.	Air-Oil-Water Pressure in PSI		
	Up to 75°F	76° to 125°F	126° to 175°F
1/4	300	300	300
5/16	300	300	300
3/8	250	250	150
1/2	200	200	150
5/8	150	100	50

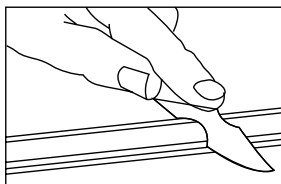
Ratings are based on use with copper tubing, and in all cases represent the maximum recommended working pressure of the fitting only. Working pressures (vs. temperatures) of other types of tubing may limit the tube and fitting assembly to pressures lower than shown above. [Consult factory for recommendations on applications other than shown above.](#)

Temperature Range:

Black/White Polypropylene: 0°F (-18°C) to +212°F (+100°C).
White Nylon: -40°F (-40°C) to +200°F (+93°C)

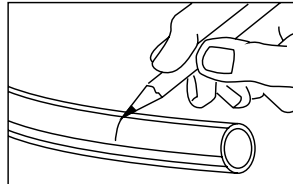
Fast Assembly

Step 1.



Cut the tube squarely and remove any burrs.

Step 2.



Mark from end of tube the length of insertion. (See Table)

Tube Size	Insertion Length with Tube Support in.	Insertion Length without Tube Support in.
1/4 O. D.	5/8	9/16
5/16 O. D.	5/8	9/16
3/8 O. D.	13/16	3/4
1/2 O. D.	7/8	13/16
5/8 O. D.	1	15/16

Step 3.

Loosen nut on fitting until three threads are visible. Fittings for glass tubes must be disassembled and the grab ring removed.

Step 4.

Moisten end of the tube with water. Push the tube **straight** into fitting until it bottoms on the fitting's shoulder. Tighten nut by hand. Additional tightening should not be necessary, but 1/4 additional turn may be added if desired. **Do not overtighten** nut as the threads will strip and the fitting will not function properly. A proper assembly will not show the insertion mark extending beyond the nut. If the insertion mark is visible, then steps 1 thru 4 must be repeated.

Step 5.

When using clear vinyl tubing or urethane tubing, it is necessary to use a **TS** tube support. Disassemble the fitting and place the nut, grab ring, spacer and tube support, in that order on the tube. Locate the grab ring at the insertion mark as shown. Seat the O-ring in the body, then proceed with Step 4.

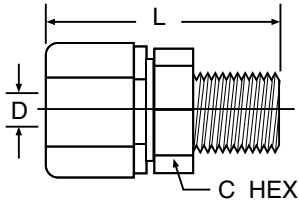
Note: Provide adequate fail-safe mechanisms such as leakage detection sensors, automatic shut-off controls or other industry and code appropriate fail-safe devices in the design of your water-handling appliance to protect against personal injury and property damage. Plastic fittings containing an o-ring that are used in water applications should be replaced at least every five years or more frequently depending on the environment and severity of the application.





MC - Male Connector

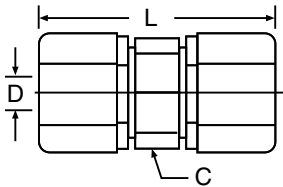
Tube to male pipe



White Polypropylene Part Number	Black Polypropylene Part Number	White Nylon Part Number	Nom. Tube O. D.	NPTF Thread Size	C Hex	L Overall Length	D Thru-Hole Min.
#	#	#					
W4MC2	P4MC2	N4MC2	1/4	1/8	11/16	1.38	.170
W4MC4	P4MC4	N4MC4	1/4	1/4	11/16	1.51	.170
W4MC6	P4MC6	N4MC6	1/4	3/8	11/16	1.48	.170
W5MC2	P5MC2	N5MC2	5/16	1/8	11/16	1.38	.170
W5MC4	P5MC4	N5MC4	5/16	1/4	11/16	1.50	.250
W6MC2	P6MC2	N6MC2	3/8	1/8	13/16	1.50	.170
W6MC4	P6MC4	N6MC4	3/8	1/4	13/16	1.67	.250
W6MC6	P6MC6	N6MC6	3/8	3/8	13/16	1.67	.250
W6MC8	P6MC8	N6MC8	3/8	1/2	1	1.78	.250
W6MC12	P6MC12	N6MC12	3/8	3/4	1	1.84	.250
W8MC2	P8MC2	N8MC2	1/2	1/8	1	1.61	.170
W8MC4	P8MC4	N8MC4	1/2	1/4	1	1.74	.250
W8MC6	P8MC6	N8MC6	1/2	3/8	1	1.74	.375
W8MC8	P8MC8	N8MC8	1/2	1/2	1	1.87	.375
W8MC12	P8MC12	N8MC12	1/2	3/4	1	1.89	.375
W10MC2	P10MC2	N10MC2	5/8	1/8	1-1/8	1.75	.170
W10MC4	P10MC4	N10MC4	5/8	1/4	1-1/8	1.90	.250
W10MC6	P10MC6	N10MC6	5/8	3/8	1-1/8	1.90	.375
W10MC8	P10MC8	N10MC8	5/8	1/2	1-1/8	2.01	.500
W10MC12	P10MC12	N10MC12	5/8	3/4	1-1/8	2.04	.500

UC - Union Connector

Tube to tube

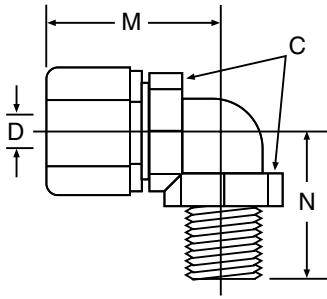


White Polypropylene Part Number	Black Polypropylene Part Number	White Nylon Part Number	Nom. Tube O. D.	C Hex	L Overall Length	D Thru-Hole Min.
#	#	#				
W4UC4	P4UC4	N4UC4	1/4	11/16	1.62	.170
W5UC4	P5UC4	N5UC4	5/16-1/4	11/16	1.62	.170
W5UC5	P5UC5	N5UC5	5/16	11/16	1.62	.190
W6UC4	P6UC4	N6UC4	3/8-1/4	13/16	1.80	.170
W6UC5	P6UC5	N6UC5	3/8-5/16	13/16	1.80	.190
W6UC6	P6UC6	N6UC6	3/8	13/16	1.92	.250
W8UC6	P8UC6	N8UC6	1/2-3/8	1	1.95	.250
W8UC8	P8UC8	N8UC8	1/2	1	2.03	.375
W10UC6	P10UC6	N10UC6	5/8-3/8	1-1/8	2.19	.250
W10UC8	P10UC8	N10UC8	5/8-1/2	1-1/8	2.24	.375
W10UC10	P10UC10	N10UC10	5/8	1-1/8	2.40	.500



ME - Male Elbow

Tube to male pipe

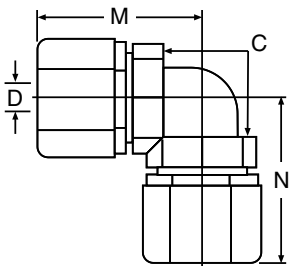


White Polypropylene Part Number	Black Polypropylene Part Number	White Nylon Part Number	Nom. Tube O. D.	NPTF Thread Size	C Hex	M	N	D Thru-Hole Min.
#	#	#						
W4ME2	P4ME2	N4ME2	1/4	1/8	3/4	1.06	0.81	.170
W4ME4	P4ME4	N4ME4	1/4	1/4	3/4	1.06	1.02	.170
W4ME6	P4ME6	N4ME6	1/4	3/8	3/4	1.06	1.02	.170
W5ME2	P5ME2	N5ME2	5/16	1/8	3/4	1.06	0.81	.193
W5ME4	P5ME4	N5ME4	5/16	1/4	3/4	1.06	1.02	.193
W5ME6	P5ME6	N5ME6	5/16	3/8	3/4	1.06	1.02	.193
W6ME4	P6ME4	N6ME4	3/8	1/4	7/8	1.28	1.12	.250
W6ME6	P6ME6	N6ME6	3/8	3/8	7/8	1.28	1.12	.250
W6ME8	P6ME8	N6ME8	3/8	1/2	1-1/8	1.28	1.34	.250
W6ME12	P6ME12	N6ME12	3/8	3/4	1-3/16	1.59	1.40	.250
W8ME4	P8ME4	N8ME4	1/2	1/4	1-1/16	1.48	1.22	.250
W8ME6	P8ME6	N8ME6	1/2	3/8	1-1/16	1.56	1.21	.375
W8ME8	P8ME8	N8ME8	1/2	1/2	1-1/16	1.56	1.34	.375
W8ME12	P8ME12	N8ME12	1/2	3/4	1-1/8	1.50	1.40	.375
W10ME8	P10ME8	N10ME8	5/8	1/2	1-3/16	1.72	1.40	.500

E

EU - Elbow Union

Tube to tube

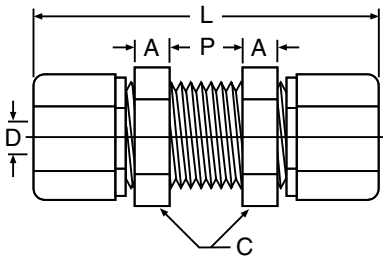


White Polypropylene Part Number	Black Polypropylene Part Number	White Nylon Part Number	Nom. Tube O. D.	C Hex	M	N	D Thru-Hole Min.
#	#	#					
W4EU4	P4EU4	N4EU4	1/4	3/4	1.06	1.06	.170
W5EU4	P5EU4	N5EU4	5/16-1/4	3/4	1.06	1.06	.170
W5EU5	P5EU5	N5EU5	5/16	3/4	1.06	1.06	.193
W6EU4	P6EU4	N6EU4	3/8-1/4	7/8	1.06	1.28	.170
W6EU5	P6EU5	N6EU5	3/8-5/16	7/8	1.06	1.28	.170
W6EU6	P6EU6	N6EU6	3/8	7/8	1.28	1.28	.250
W8EU6	P8EU6	N8EU6	1/2-3/8	1-1/16	1.37	1.56	.250
W8EU8	P8EU8	N8EU8	1/2	1-1/16	1.56	1.56	.375
W10EU10	P10EU10	N10EU10	5/8	1-3/16	1.72	1.72	.500



BU - Bulkhead Union

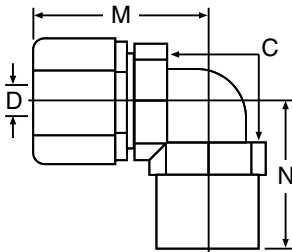
Tube to tube



White Polypropylene Part Number	Black Polypropylene Part Number	White Nylon Part Number	Nom. Tube O. D.	A Ref.	C Hex	L Overall Length	P Max.	D Thru-Hole Min.	Bulkhead Hole Drill Size
#	#	#							
W4BU4	P4BU4	N4BU4	1/4	1/4	13/16	2-11/64	3/8	.170	21/32
W5BU5	P5BU5	N5BU5	5/16	1/4	13/16	2-11/64	3/8	.187	21/32
W6BU6	P6BU6	N6BU6	3/8	9/32	15/16	2-39/64	1/2	.250	25/32
W8BU8	P8BU8	N8BU8	1/2	5/16	1-5/32	2-3/4	1/2	.375	31/32

FE - Female Elbow

Tube to female pipe

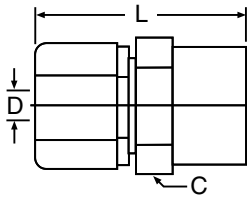


White Polypropylene Part Number	Black Polypropylene Part Number	White Nylon Part Number	Nom. Tube O. D.	NPTF Thread Size	C Hex	M	N	D Thru-Hole Min.
#	#	#						
W4FE2	P4FE2	N4FE2	1/4	1/8	11/16	1.10	0.84	.170
W4FE4	P4FE4	N4FE4	1/4	1/4	11/16	1.10	0.97	.170
W5FE2	P5FE2	N5FE2	5/16	1/8	11/16	1.10	0.84	.193
W6FE4	P6FE4	N6FE4	3/8	1/4	13/16	1.30	1.06	.250
W6FE6	P6FE6	N6FE6	3/8	3/8	13/16	1.30	1.03	.250
W8FE6	P8FE6	N8FE6	1/2	3/8	1	1.50	1.16	.375
W8FE8	P8FE8	N8FE8	1/2	1/2	1	1.50	1.27	.375
W10FE8	P10FE8	N10FE8	5/8	1/2	1-1/8	1.70	1.34	.500



FC - Female Connector

Tube to female pipe

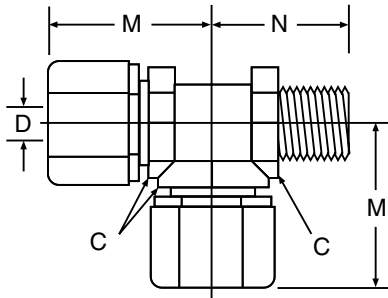


White Polypropylene Part Number	Black Polypropylene Part Number	White Nylon Part Number	Nom. Tube O. D.	NPTF Thread Size	C Hex	L Overall Length	D Thru-Hole Min.
#	#	#					
W4FC2	P4FC2	N4FC2	1/4	1/8	11/16	1.30	.170
W4FC4	P4FC4	N4FC4	1/4	1/4	11/16	1.40	.170
W6FC4	P6FC4	N6FC4	3/8	1/4	1	1.57	.250
W6FC6	P6FC6	N6FC6	3/8	3/8	1-1/8	1.57	.250
W6FC8	P6FC8	N6FC8	3/8	1/2	1-1/8	1.67	.250
W8FC6	P8FC6	N8FC6	1/2	3/8	1	1.66	.375
W8FC8	P8FC8	N8FC8	1/2	1/2	1-1/8	1.78	.375
W10FC8	P10FC8	N10FC8	5/8	1/2	1-1/8	1.95	.500



MR - Male Run Tee

Tube to male pipe

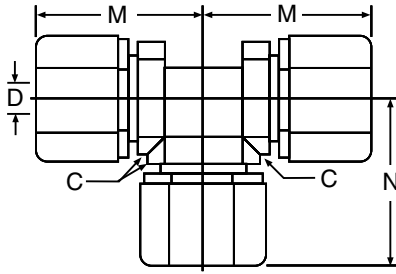


White Polypropylene Part Number	Black Polypropylene Part Number	White Nylon Part Number	Nom. Tube O. D.	NPTF Thread Size	C Hex	M	N	D Thru-Hole Min.
#	#	#						
W4MR2	P4MR2	N4MR2	1/4	1/8	11/16	1.09	0.89	.170
W6MR4	P6MR4	N6MR4	3/8	1/4	13/16	1.30	1.17	.250
W8MR6	P8MR6	N8MR6	1/2	3/8	1	1.46	1.28	.375
W10MR8	P10MR8	N10MR8	5/8	1/2	1-1/8	1.68	1.50	.500



TU - Tee Union

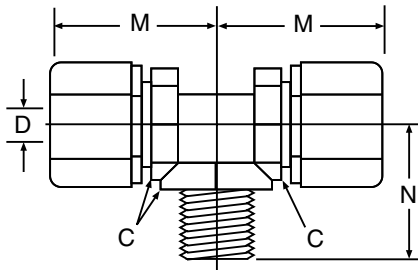
Tube to tube



White Polypropylene Part Number	Black Polypropylene Part Number	White Nylon Part Number	Nom. Tube O. D.	C Hex	M	N	D Thru-Hole Min.
#	#	#					
W4TU4	P4TU4	N4TU4	1/4	11/16	1.09	1.09	.170
W5TU5	P5TU5	N5TU5	5/16	11/16	1.09	1.09	.187
W6TU6	P6TU6	N6TU6	3/8	13/16	1.30	1.30	.250
W8TU6	P8TU6	N8TU6	1/2-3/8	1	1.46	1.39	.250
W8TU8	P8TU8	N8TU8	1/2	1	1.46	1.46	.375
W10TU6	P10TU6	N10TU6	5/8-3/8	1-1/8	1.68	1.46	.250
W10TU10	P10TU10	N10TU10	5/8	1-3/16	1.68	1.68	.500

MT - Male Branch Tee

Tube to male pipe



White Polypropylene Part Number	Black Polypropylene Part Number	White Nylon Part Number	Nom. Tube O. D.	NPTF Thread Size	C Hex	M	N	D Thru-Hole Min.
#	#	#						
W4MT2	P4MT2	N4MT2	1/4	1/8	11/16	1.09	0.89	.170
W4MT4	P4MT4	N4MT4	1/4	1/4	11/16	1.09	1.06	.170
W5MT2	P5MT2	N5MT2	5/16	1/8	11/16	1.09	0.89	.170
W5MT4	P5MT4	N5MT4	5/16	1/4	11/16	1.09	1.06	.187
W6MT4	P6MT4	N6MT4	3/8	1/4	13/16	1.30	1.12	.250
W6MT6	P6MT6	N6MT6	3/8	3/8	13/16	1.30	1.10	.250
W8MT6	P8MT6	N8MT6	1/2	3/8	1	1.46	1.22	.375
W8MT8	P8MT8	N8MT8	1/2	1/2	1	1.46	1.43	.375
W10MT8	P10MT8	N10MT8	5/8	1/2	1-1/8	1.68	1.41	.500

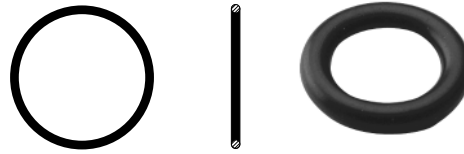


GR - Grab Ring (Stainless or Plastic)

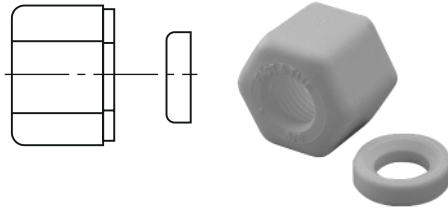


Stainless Grab Ring Part Number	Plastic Grab Ring Part Number	O-Ring Part Number	For Nom. Tube O. D.
#	#	#	
4GR	4GRP	4OR	1/4
5GR	5GRP	5OR	5/16
6GR	6GRP	6OR	3/8
8GR	8GRP	8OR	1/2
10GR	10GRP	10OR	5/8

OR - O-Ring

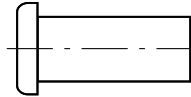


NS - Nut and Spacer Sets



White Polypropylene Part Number	Black Polypropylene Part Number	White Nylon Part Number	For Nom. Tube O. D.
#	#	#	
W4NS	P4NS	N4NS	1/4
W5NS	P5NS	N5NS	5/16
W6NS	P6NS	N6NS	3/8
W8NS	P8NS	N8NS	1/2
W10NS	P10NS	N10NS	5/8

TS - Tube Support



Polypropylene Part Number	Nylon Part Number	For Tube Part Number
#	#	
P4TS3	N4TS3	PV43
P5TS3	N5TS3	PV53
P6TS4	N6TS4	PV64
P8TS6	N8TS6	PV86
P10TS8	N10TS8	PV108

E



Par-Barb Thermoplastic Fittings

Par-Barb fittings are precision injection molded from high-strength, chemically inert, thermoplastic materials.

The specially engineered four-barb design generates the maximum gripping and sealing power when combined with a hose clamp. The unique barb design requires the tube or hose to expand slightly to accept the fitting, providing a positive seal on the barbs.

Par-Barb fittings are widely used with Parflex clear vinyl tubing, urethane tubing and a variety of rubber tubing and hose. Par-Barb fittings meet FDA and NSF specifications for food contact and potable water.*

Par-Barb is recommended in medical, pollution control, food and beverage applications. Other uses include irrigation, instrumentation, reverse osmosis and deionized water systems.

Temperature range:

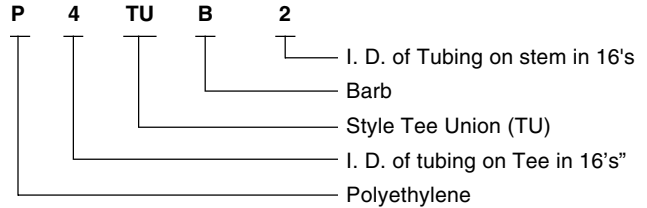
Black Polyethylene: -65°F (-54°C) to +190°F (+88°C.)

White Nylon: -40°F (-40°C) to +200°F (+93°C.)

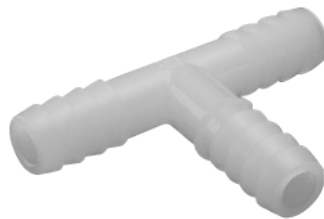
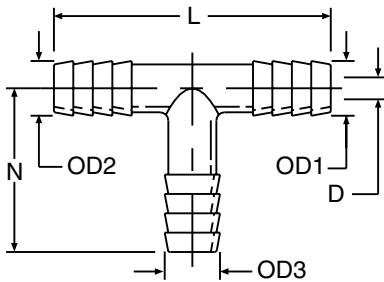
Working Pressures:

Par-Barb fittings are generally used in systems where pressures do not exceed 125 psi. When used in excess of 125 psi, Par-Barb fittings, in all sizes, should be tested by the customer in his particular application. Operating pressures of Par-Barb fittings are governed by ambient and fluid temperatures, type of fluid conveyed, hose or tubing used, clamping mechanism employed and conditions of mechanical abuse.

How to order Par-barb fittings:



TUB - Tee Union

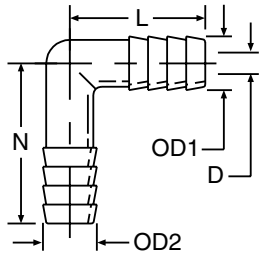


Black High Density Linear Polyethylene Part Number	White Nylon Part Number	Tube or Hose I. D. 1 & 2	Tube or Hose I. D. 3	O. D. 1 & 2	O. D. 3	L	N	D Flow Diameter
#	#	⊙	⊙	⊙	⊙			∅
P2TUB2	N2TUB2	1/8	1/8	.141	.141	1.203	0.594	.078
P3TUB2	N3TUB2	3/16	1/8	.205	.141	1.941	1.256	.078
P3TUB3	N3TUB3	3/16	3/16	.245	.245	1.941	1.256	.106
P4TUB2	N4TUB2	1/4	1/8	.308	.141	2.004	1.256	.078
P4TUB3	N4TUB3	1/4	3/16	.308	.245	2.004	1.256	.106
P4TUB4	N4TUB4	1/4	1/4	.308	.308	2.004	1.256	.153
P5TUB5	N5TUB5	5/16	5/16	.361	.361	2.058	1.256	.215
P6TUB3	N6TUB3	3/8	3/16	.425	.245	1.941	1.256	.106
P6TUB4	N6TUB4	3/8	1/4	.425	.308	2.121	1.256	.153
P6TUB6	N6TUB6	3/8	3/8	.425	.425	2.134	1.256	.247
P6TUB8	N6TUB8	3/8	1/2	.425	.550	2.121	1.256	.247
P8TUB4	N8TUB4	1/2	1/4	.550	.308	2.246	1.256	.153
P8TUB6	N8TUB6	1/2	3/8	.550	.425	2.248	1.256	.247
P8TUB8	N8TUB8	1/2	1/2	.550	.550	2.248	1.256	.372
P10TUB8	N10TUB8	5/8	1/2	.644	.550	2.340	1.256	.372
P10TUB10	N10TUB10	5/8	5/8	.644	.644	2.340	1.256	.465

*P2UCB2, P2TUB2, P12HPN6 are not FDA compliant.



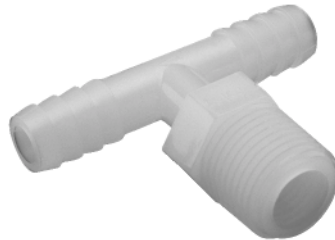
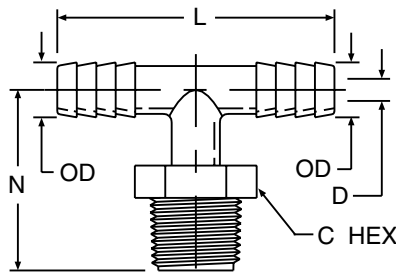
EUB - Elbow Union



Black High Density Linear Polyethylene Part Number #	White Nylon Part Number #	Tube or Hose I. D.		O. D. 1	O. D. 2	L	N	D Flow Diameter
		1	2					
P4EUB4	N4EUB4	1/4	1/4	.308	.308	1.002	1.256	.153
P6EUB6	N6EUB6	3/8	3/8	.425	.425	1.060	1.256	.247
P8EUB4	N8EUB4	1/2	1/4	.550	.308	1.002	1.256	.153
P8EUB6	N8EUB6	1/2	3/8	.550	.425	1.060	1.256	.247
P8EUB8	N8EUB8	1/2	1/2	.550	.550	1.123	1.256	.372
P10EUB10	N10EUB10	5/8	5/8	.644	.644	1.170	1.256	.465
P12EUB12	N12EUB12	3/4	3/4	.788	.788	1.242	1.256	.606

E

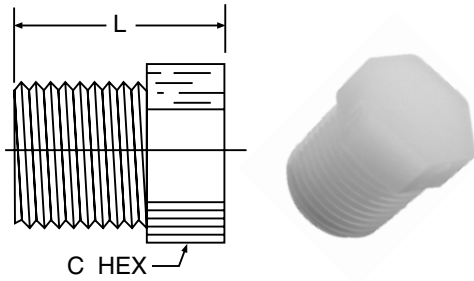
MTB - Tee Male Branch



Black High Density Linear Polyethylene Part Number #	White Nylon Part Number #	Tube or Hose I.D.	NPTF Pipe Thread Size	O.D.	C Hex	L	N	D Flow Diameter
P3MTB2	N3MTB2	3/16	1/8	.245	7/16	1.941	1.187	.106
P3MTB4	N3MTB4	3/16	1/4	.245	9/16	1.941	1.406	.106
P4MTB2	N4MTB2	1/4	1/8	.308	7/16	2.004	1.187	.153
P4MTB4	N4MTB4	1/4	1/4	.308	9/16	2.004	1.406	.153
P4MTB6	N4MTB6	1/4	3/8	.308	11/16	2.004	1.436	.153
P6MTB4	N6MTB4	3/8	1/4	.425	9/16	2.121	1.406	.247
P6MTB6	N6MTB6	3/8	3/8	.425	11/16	2.121	1.436	.247
P6MTB8	N6MTB8	3/8	1/2	.425	7/8	2.121	1.626	.247
P8MTB4	N8MTB4	1/2	1/4	.550	9/16	2.246	1.406	.281
P8MTB6	N8MTB6	1/2	3/8	.550	11/16	2.246	1.436	.372
P8MTB8	N8MTB8	1/2	1/2	.550	7/8	2.246	1.626	.372
P12MTB12	N12MTB12	3/4	3/4	.788	1-1/8	2.484	1.636	.606

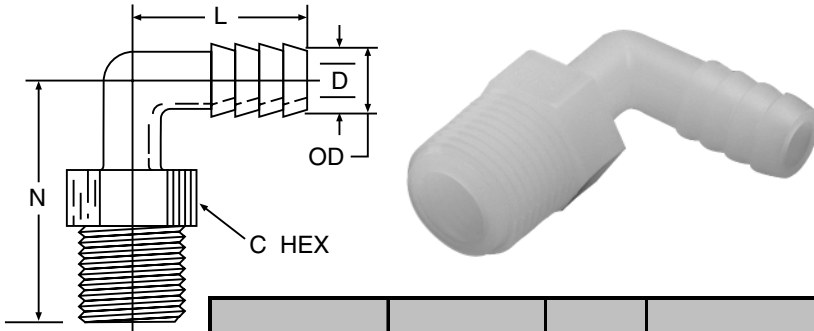


HPL - Hex Head Pipe Plug



Black High Density Linear Polyethylene Part Number	White Nylon Part Number	NPTF Pipe Thread	C Hex	L Overall Length
#	#			
P2HPL	N2HPL	1/8	7/16	0.660
P4HPL	N4HPL	1/4	9/16	0.880
P6HPL	N6HPL	3/8	11/16	0.905
P8HPL	N8HPL	1/2	7/8	1.092
P12HPL	N12HPL	3/4	1-1/8	1.115

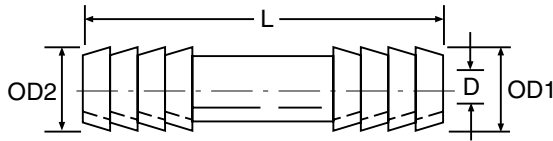
MEB - Male Elbow Connector



Black High Density Linear Polyethylene Part Number	White Nylon Part Number	Tube or Hose I. D.	NPTF Pipe Thread	C Hex	O. D.	L	N	D Flow Diameter
#	#							
P3MEB2	N3MEB2	3/16	1/8	7/16	.245	0.971	1.186	.106
P3MEB4	N3MEB4	3/16	1/4	9/16	.245	0.971	1.406	.106
P4MEB2	N4MEB2	1/4	1/8	7/16	.308	1.002	1.186	.153
P4MEB4	N4MEB4	1/4	1/4	9/16	.308	1.002	1.406	.153
P4MEB6	N4MEB6	1/4	3/8	11/16	.308	1.002	1.436	.153
P4MEB8	N4MEB8	1/4	1/2	7/8	.308	1.002	1.626	.153
P4MEB12	N4MEB12	1/4	3/4	1-1/8	.308	1.002	1.636	.153
P6MEB2	N6MEB2	3/8	1/8	7/16	.425	1.060	1.186	.247
P6MEB4	N6MEB4	3/8	1/4	9/16	.425	1.060	1.406	.247
P6MEB6	N6MEB6	3/8	3/8	11/16	.425	1.060	1.436	.247
P6MEB8	N6MEB8	3/8	1/2	7/8	.425	1.060	1.626	.247
P6MEB12	N6MEB12	3/8	3/4	1-1/8	.425	1.060	1.636	.247
P8MEB4	N8MEB4	1/2	1/4	9/16	.550	1.123	1.406	.372
P8MEB6	N8MEB6	1/2	3/8	11/16	.550	1.123	1.436	.372
P8MEB8	N8MEB8	1/2	1/2	7/8	.550	1.123	1.626	.372
P8MEB12	N8MEB12	1/2	3/4	1-1/8	.550	1.123	1.636	.372
P10MEB6	N10MEB6	5/8	3/8	11/16	.644	1.170	1.436	.465
P10MEB8	N10MEB8	5/8	1/2	7/8	.644	1.170	1.626	.465
P10MEB12	N10MEB12	5/8	3/4	1-1/8	.644	1.170	1.636	.465
P12MEB8	N12MEB8	3/4	1/2	7/8	.788	1.242	1.626	.606



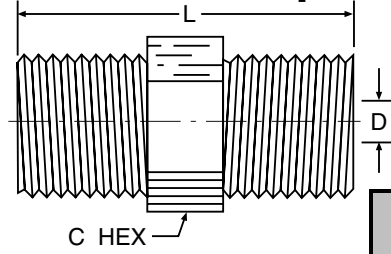
UCB - Union Connector



Black High Density Polyethylene Part Number	White Nylon Part Number	1	2	O. D. 1	O. D. 2	L	D Flow Diameter
#	#						
P2UCB2	N2UCB2	1/8	1/8	.152	.152	.625	.050
P3UCB3	N3UCB3	3/16	3/16	.245	.245	1.750	.106
P4UCB3	N4UCB3	1/4	3/16	.308	.245	1.750	.106
P4UCB4	N4UCB4	1/4	1/4	.308	.308	1.750	.153
P5UCB5	N5UCB5	5/16	5/16	.361	.361	1.750	.215
P6UCB4	N6UCB4	3/8	1/4	.425	.308	1.750	.153
P6UCB6	N6UCB6	3/8	3/8	.425	.425	1.733	.247
P8UCB4	N8UCB4	1/2	1/4	.550	.308	1.750	.153
P8UCB6	N8UCB6	1/2	3/8	.550	.425	1.750	.247
P8UCB8	N8UCB8	1/2	1/2	.550	.550	1.750	.372
P10UCB6	N10UCB6	5/8	3/8	.644	.425	1.750	.247
P10UCB8	N10UCB8	5/8	1/2	.644	.550	1.750	.372
P10UCB10	N10UCB10	5/8	5/8	.644	.644	1.750	.465

E

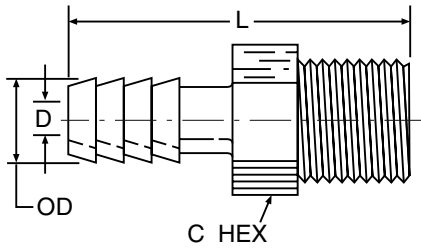
HPN - Hex Pipe Nipple



Black High Density Linear Polyethylene Part Number	White Nylon Part Number	Side 1	Side 2	C Hex	L	D1 Diameter	D2 Diameter
#	#						
P2HPN2	N2HPN2	1/8	1/8	7/16	1.062	.187	.187
P4HPN2	N4HPN2	1/4	1/8	9/16	1.281	.286	.187
P4HPN4	N4HPN4	1/4	1/4	9/16	1.469	.285	.285
P6HPN2	N6HPN2	3/8	1/8	11/16	1.332	.406	.187
P6HPN4	N6HPN4	3/8	1/4	11/16	1.488	.406	.285
P6HPN6	N6HPN6	3/8	3/8	11/16	1.500	.406	.406
P8HPN2	N8HPN2	1/2	1/8	7/8	1.485	.618	.187
P8HPN4	N8HPN4	1/2	1/4	7/8	1.687	.618	.285
P8HPN6	N8HPN6	1/2	3/8	7/8	1.687	.618	.406
P8HPN8	N8HPN8	1/2	1/2	7/8	1.875	.618	.618
P12HPN6	N12HPN6	3/4	3/8	1-1/8	1.703	.750	.408
P12HPN8	N12HPN8	3/4	1/2	1-1/8	1.891	.750	.618
P12HPN12	N12HPN12	3/4	3/4	1-1/8	1.932	.750	.750



MCB - Male Connector Adapter



Black High Density Linear Polyethylene Part Number	White Nylon Part Number	Tube or Hose I. D.	NPTF Pipe Thread	C Hex	O. D.	L	D Flow Diameter
#	#						
P3MCB2	N3MCB2	3/16	1/8	7/16	.245	1.530	.106
P3MCB4	N3MCB4	3/16	1/4	9/16	.245	1.750	.106
P3MCB8	N3MCB8	3/16	1/2	7/8	.245	1.970	.106
P4MCB2	N4MCB2	1/4	1/8	7/16	.308	1.530	.153
P4MCB4	N4MCB4	1/4	1/4	9/16	.308	1.750	.153
P4MCB6	N4MCB6	1/4	3/8	11/16	.308	1.780	.153
P4MCB8	N4MCB8	1/4	1/2	7/8	.308	1.970	.153
P4MCB12	N4MCB12	1/4	3/4	1-1/8	.308	1.980	.153
P5MCB2	N5MCB2	5/16	1/8	7/16	.361	1.530	.215
P5MCB4	N5MCB4	5/16	1/4	9/16	.361	1.750	.215
P5MCB6	N5MCB6	5/16	3/8	11/16	.361	1.780	.215
P6MCB2	N6MCB2	3/8	1/8	7/16	.425	1.530	.247
P6MCB4	N6MCB4	3/8	1/4	9/16	.425	1.750	.247
P6MCB6	N6MCB6	3/8	3/8	11/16	.425	1.780	.247
P6MCB8	N6MCB8	3/8	1/2	7/8	.425	1.970	.247
P6MCB12	N6MCB12	3/8	3/4	1-1/8	.425	1.980	.247
P8MCB4	N8MCB4	1/2	1/4	9/16	.550	1.750	.372
P8MCB6	N8MCB6	1/2	3/8	11/16	.550	1.780	.372
P8MCB8	N8MCB8	1/2	1/2	7/8	.550	1.970	.372
P8MCB12	N8MCB12	1/2	3/4	1-1/8	.550	1.980	.372
P10MCB6	N10MCB6	5/8	3/8	11/16	.644	1.780	.465
P10MCB8	N10MCB8	5/8	1/2	7/8	.644	1.970	.465
P10MCB12	N10MCB12	5/8	3/4	1-1/8	.644	1.980	.465
P12MCB8	N12MCB8	3/4	1/2	7/8	.788	1.970	.606
P12MCB12	N12MCB12	3/4	3/4	1-1/8	.788	1.980	.606



Mini-Barb Thermoplastic Fittings

Mini-Barb Fittings are precision molded from 100% virgin thermoplastic resins. The barb design uses a tube expansion ratio of 1-1/2 x tube I. D., allowing ease of installation while retaining leak free, high-pressure capabilities.

Parflex Mini-Barb fittings use a special tapered #10-32 UNF threaded design to compensate for threaded port connections which are oversized or misaligned. Mini-barbs eliminate the need for thread sealant when tightened to the shoulder; however, thread sealant should be used to guarantee a leak-free connection. The minimum full thread engagement is 1/4". The 90° inclusive lead thread countersink ranges from .21" to .23"

Male connectors and hex plugs are also available with a standard, straight #10-32 UNF male thread, and require .2" minimum full thread.

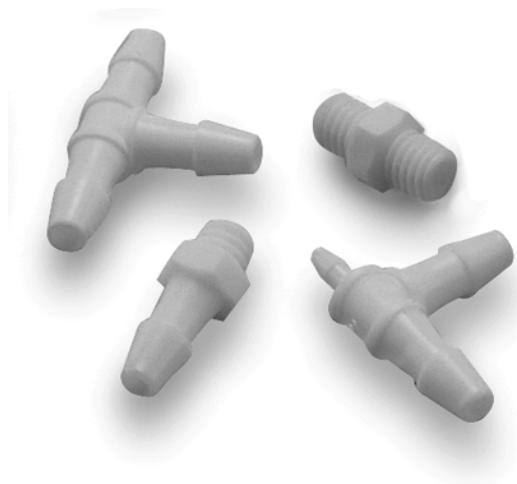
Color coded materials simplify circuit design.

Materials: Mini-Barb fittings are available in two materials – nylon in a choice of colors, and polypropylene in natural.

Applications: Use with Parflex or other high quality soft flexible tubing and hose for pneumatic instrumentation circuits, fluidic circuitry, pneumatic logic, laboratory and automated production equipment, dental/medical equipment and other applications where miniature fluid components are required.

Working Pressure and Temperature Ranges:

- Up to 125 psi
- Polypropylene from 0°F (-18°F) to + 212°F (+100°C)
- Nylon from -40°F (-40°C) to 200°F (+93°C)



Sizes:

All threads are #10-32 special taper or standard straight. Tube sizes are determined by the number of sixteenths of an inch in the tube I. D.

- 1 = 1/16
- 15 (1.5) = 3/32
- 2 = 1/8
- 25 (2.5) = 5/32

How to order Mini-Thermoplastic fittings: Part numbers are constructed from symbols that identify the material, size, style and color of the fitting.

Example:

Material
Mini-thermoplastic Nylon

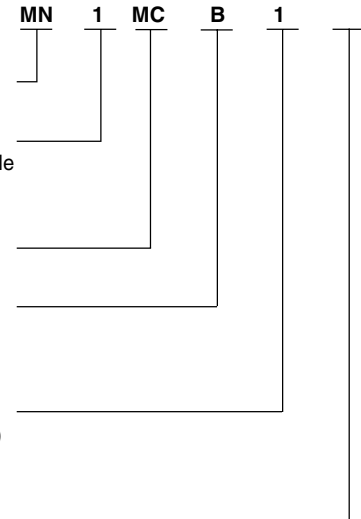
Tube Size I. D.*
or Thread Size when applicable
1 = 1/16" (.062) tube
*Leave blank on HPL, SPL

Style
Male connector

Style
Barbed Tube Connection
leave blank on HPL, SPL,
HPN

Thread Size*
(or Tube I. D. when applicable)
1 = #10-32
*Leave blank on YUB, TPB

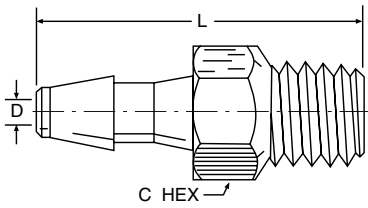
Color
Blank = Black





SMCB - Male Connector

Straight #10-32 Thread



1SMCB1

Part Number	Color	Tube I. D.	Thread Size	C Hex	L	Flow Diameter D
#						
MN1SMCB1W	White	.062	10-32 UNF	1/4	.45	.047
MN1SMCB1G	Green	.062	10-32 UNF	1/4	.45	.047
MN1SMCB1	Black	.062	10-32 UNF	1/4	.45	.047
MN1SMCB1B	Blue	.062	10-32 UNF	1/4	.45	.047
MN1SMCB1R	Red	.062	10-32 UNF	1/4	.45	.047
MP1SMCB1N	Natural	.062	10-32 UNF	1/4	.45	.047

15SMCB1

Part Number	Color	Tube I. D.	Thread Size	C Hex	L	Flow Diameter D
#						
MN15SMCB1W	White	.094	10-32 UNF	1/4	.55	.070
MN15SMCB1G	Green	.094	10-32 UNF	1/4	.55	.070
MN15SMCB1	Black	.094	10-32 UNF	1/4	.55	.070
MN15SMCB1B	Blue	.094	10-32 UNF	1/4	.55	.070
MN15SMCB1R	Red	.094	10-32 UNF	1/4	.55	.070
MP15SMCB1N	Natural	.094	10-32 UNF	1/4	.55	.070

2SMCB1

Part Number	Color	Tube I. D.	Thread Size	C Hex	L	Flow Diameter D
#						
MN2SMCB1W	White	.125	10-32 UNF	1/4	.64	.094
MN2SMCB1G	Green	.125	10-32 UNF	1/4	.64	.094
MN2SMCB1	Black	.125	10-32 UNF	1/4	.64	.094
MN2SMCB1B	Blue	.125	10-32 UNF	1/4	.64	.094
MN2SMCB1R	Red	.125	10-32 UNF	1/4	.64	.094
MP2SMCB1N	Natural	.125	10-32 UNF	1/4	.64	.094

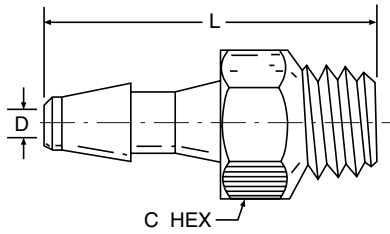
25SMCB1

Part Number	Color	Tube I. D.	Thread Size	C Hex	L	Flow Diameter D
#						
MN25SMCB1W	White	.156	10-32 UNF	1/4	.74	.117
MN25SMCB1G	Green	.156	10-32 UNF	1/4	.74	.117
MN25SMCB1	Black	.156	10-32 UNF	1/4	.74	.117
MN25SMCB1B	Blue	.156	10-32 UNF	1/4	.74	.117
MN25SMCB1R	Red	.156	10-32 UNF	1/4	.74	.117
MP25SMCB1N	Natural	.156	10-32 UNF	1/4	.74	.117



MCB - Male Connector

Special Tapered #10-32 Thread



1MCB1

Part Number	Color	Tube I. D.	Tapered Thread	C Hex	L	Flow Diameter D
#						
MN1MCB1W	White	.062	10-32 UNF	1/4	.49	.047
MN1MCB1G	Green	.062	10-32 UNF	1/4	.49	.047
MN1MCB1	Black	.062	10-32 UNF	1/4	.49	.047
MN1MCB1B	Blue	.062	10-32 UNF	1/4	.49	.047
MN1MCB1R	Red	.062	10-32 UNF	1/4	.49	.047
MP1MCB1N	Natural	.062	10-32 UNF	1/4	.49	.047

15MCB1

Part Number	Color	Tube I. D.	Tapered Thread	C Hex	L	Flow Diameter D
#						
MN15MCB1W	White	.094	10-32 UNF	1/4	.59	.070
MN15MCB1G	Green	.094	10-32 UNF	1/4	.59	.070
MN15MCB1	Black	.094	10-32 UNF	1/4	.59	.070
MN15MCB1B	Blue	.094	10-32 UNF	1/4	.59	.070
MN15MCB1R	Red	.094	10-32 UNF	1/4	.59	.070
MP15MCB1N	Natural	.094	10-32 UNF	1/4	.59	.070

2MCB1

Part Number	Color	Tube I. D.	Tapered Thread	C Hex	L	Flow Diameter D
#						
MN2MCB1W	White	.125	10-32 UNF	1/4	.69	.094
MN2MCB1G	Green	.125	10-32 UNF	1/4	.69	.094
MN2MCB1	Black	.125	10-32 UNF	1/4	.69	.094
MN2MCB1B	Blue	.125	10-32 UNF	1/4	.69	.094
MN2MCB1R	Red	.125	10-32 UNF	1/4	.69	.094
MP2MCB1N	Natural	.125	10-32 UNF	1/4	.69	.094

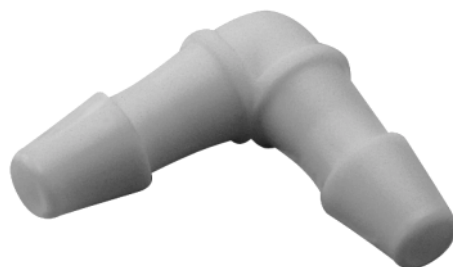
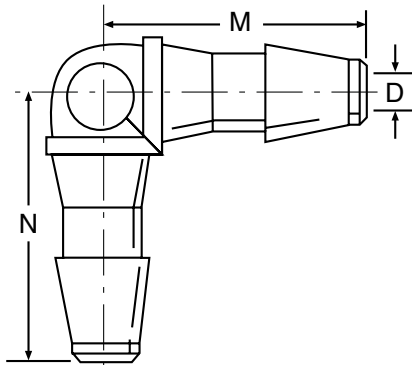
25MCB1

Part Number	Color	Tube I. D.	Tapered Thread	C Hex	L	Flow Diameter D
#						
MN25MCB1W	White	.156	10-32 UNF	1/4	.78	.117
MN25MCB1G	Green	.156	10-32 UNF	1/4	.78	.117
MN25MCB1	Black	.156	10-32 UNF	1/4	.78	.117
MN25MCB1B	Blue	.156	10-32 UNF	1/4	.78	.117
MN25MCB1R	Red	.156	10-32 UNF	1/4	.78	.117
MP25MCB1N	Natural	.156	10-32 UNF	1/4	.78	.117





EUB - Union Elbow



1EUB1

Part Number	Color	Tube I. D.	M	N	Flow Diameter D
#					
MN1EUB1W	White	.062	.25	.25	.047
MN1EUB1	Black	.062	.25	.25	.047
MP1EUB1N	Natural	.062	.25	.25	.047

15EUB15

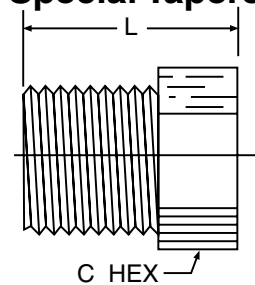
Part Number	Color	Tube I. D.	M	N	Flow Diameter D
#					
MN15EUB15W	White	.094	.37	.37	.070
MN15EUB15	Black	.094	.37	.37	.070
MP15EUB15N	Natural	.094	.37	.37	.070

2EUB2

Part Number	Color	Tube I. D.	M	N	Flow Diameter D
#					
MN2EUB2W	White	.125	.50	.50	.094
MN2EUB2	Black	.125	.50	.50	.094
MP2EUB2N	Natural	.125	.50	.50	.094

Plug HPL

Special Tapered #10-32 UNF Thread



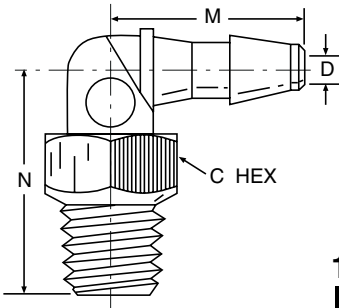
HPL1

Part Number	Color	Tapered Thread	C Hex	L	M
#					
MNHPL1W	White	10-32 UNF	1/4	.30	.20
MNHPL1	Black	10-32 UNF	1/4	.30	.20
MPHPL1N	Natural	10-32 UNF	1/4	.30	.20



MEB - Male Elbow Connector

Special Tapered #10-32 Thread



1MEB1

Part Number	Color	Tube I. D.	Tapered Thread	C Hex	M	N	Flow Diameter D
#							
MN1MEB1W	White	.062	10-32 UNF	1/4	.25	.38	.047
MN1MEB1	Black	.062	10-32 UNF	1/4	.25	.38	.047
MP1MEB1N	Natural	.062	10-32 UNF	1/4	.25	.38	.047

15MEB1

Part Number	Color	Tube I. D.	Tapered Thread	C Hex	M	N	Flow Diameter D
#							
MN15MEB1W	White	.094	10-32 UNF	1/4	.37	.42	.070
MN15MEB1	Black	.094	10-32 UNF	1/4	.37	.42	.070
MP15MEB1N	Natural	.094	10-32 UNF	1/4	.37	.42	.070

2MEB1

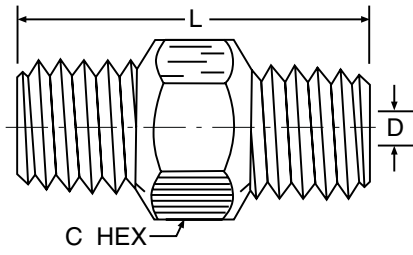
Part Number	Color	Tube I. D.	Tapered Thread	C Hex	M	N	Flow Diameter D
#							
MN2MEB1W	White	.125	10-32 UNF	1/4	.50	.46	.094
MN2MEB1	Black	.125	10-32 UNF	1/4	.50	.46	.094
MP2MEB1N	Natural	.125	10-32 UNF	1/4	.50	.46	.094





HPN - Nipple

Special Tapered #10-32 UNF Thread



1HPN1

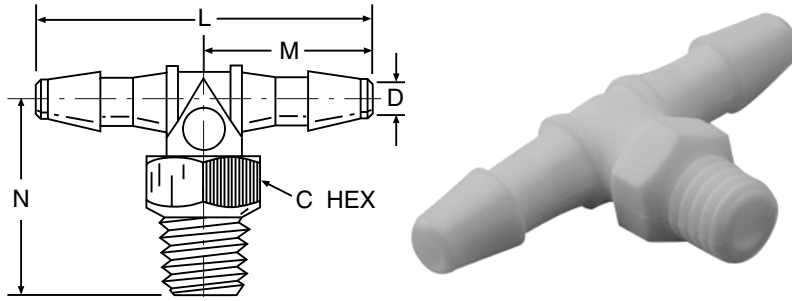
Part Number	Color	Tapered Thread	C Hex	L	Flow Diameter D
#					
MN1HPN1W	White	10-32 UNF	1/4	.49	.094
MN1HPN1	Black	10-32 UNF	1/4	.49	.094
MP1HPN1N	Natural	10-32 UNF	1/4	.49	.094





MTB - Male Branch Tee

Special Tapered #10-32 Thread



1MTB1

Part Number	Color	Tube I. D.	Tapered Thread	C Hex	L	M	N	Flow Diameter D
#								
MN1MTB1W	White	.062	10-32 UNF	1/4	.50	.25	.38	.047
MN1MTB1	Black	.062	10-32 UNF	1/4	.50	.25	.38	.047
MP1MTB1N	Natural	.062	10-32 UNF	1/4	.50	.25	.38	.047

15MTB1

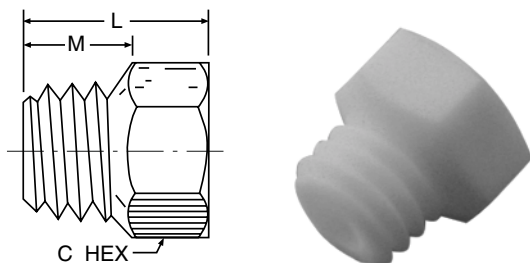
Part Number	Color	Tube I. D.	Tapered Thread	C Hex	L	M	N	Flow Diameter D
#								
MN15MTB1W	White	.094	10-32 UNF	1/4	.75	.37	.42	.070
MN15MTB1	Black	.094	10-32 UNF	1/4	.75	.37	.42	.070
MP15MTB1N	Natural	.094	10-32 UNF	1/4	.75	.37	.42	.070

2MTB1

Part Number	Color	Tube I. D.	Tapered Thread	C Hex	L	M	N	Flow Diameter D
#								
MN2MTB1W	White	.125	10-32 UNF	1/4	1.00	.50	.46	.094
MN2MTB1	Black	.125	10-32 UNF	1/4	1.00	.50	.46	.094
MP2MTB1N	Natural	.125	10-32 UNF	1/4	1.00	.50	.46	.094

SPL - Plug

Straight #10-32 Thread



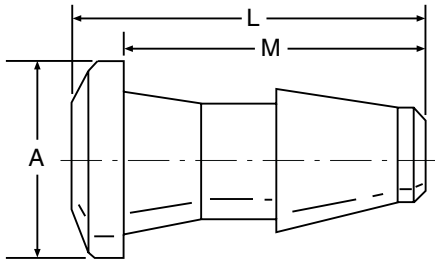
SPL1

Part Number	Color	Thread Size	C Hex	L	M
#					
MNSPL1W	White	10-32 UNF	1/4	.26	.15
MNSPL1	Black	10-32 UNF	1/4	.26	.15
MPSP1N	Natural	10-32 UNF	1/4	.26	.15

E



TPB - Tube Plug



1TPB

Part Number	Color	Tube I.D.	A	L	M
#					
MN1TPBW	White	.062	.15	.24	.19
MN1TPB	Black	.062	.15	.24	.19
MP1TPB	Natural	.062	.15	.24	.19

15TPB

Part Number	Color	Tube I.D.	A	L	M
#					
MN15TPBW	White	.094	.20	.35	.29
MN15TPB	Black	.094	.20	.35	.29
MP15TPBN	Natural	.094	.20	.35	.29

2TPB

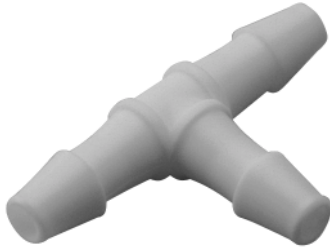
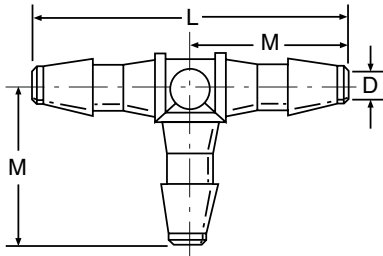
Part Number	Color	Tube I.D.	A	L	M
#					
MN2TPBW	White	.125	.28	.45	.39
MN2TPB	Black	.125	.28	.45	.39
MP2TPBN	Natural	.125	.28	.45	.39

25TPB

Part Number	Color	Tube I.D.	A	L	M
#					
MN25TPBW	White	.156	.31	.56	.48
MN25TPB	Black	.156	.31	.56	.48
MP25TPBN	Natural	.156	.31	.56	.48



TUB - Union Tee



1TUB1

Part Number	Color	Tube I. D.	L	M	Flow Diameter D
#					
MN1TUB1W	White	.062	.50	.25	.047
MN1TUB1	Black	.062	.50	.25	.047
MP1TUB1N	Natural	.062	.50	.25	.047

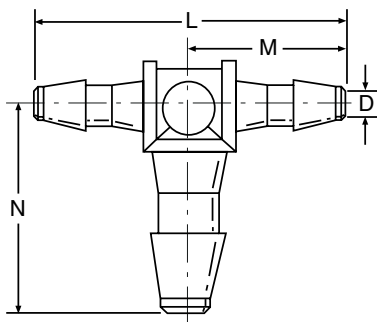
15TUB15

Part Number	Color	Tube I. D.	L	M	Flow Diameter D
#					
MN15TUB15W	White	.094	.75	.37	.070
MN15TUB15	Black	.094	.75	.37	.070
MP15TUB15N	Natural	.094	.75	.37	.070

2TUB2

Part Number	Color	Tube I. D.	L	M	Flow Diameter D
#					
MN2TUB2W	White	.125	1.00	.50	.094
MN2TUB2	Black	.125	1.00	.50	.094
MP2TUB2N	Natural	.125	1.00	.50	.094

(Combination Sizes)



1TUB15

Part Number	Color	Tube I. D.	L	M	N	Flow Diameter D
#						
MN1TUB15W	White	.062x.094	.55	.28	.37	.047
MN1TUB15	Black	.062x.094	.55	.28	.37	.047
MP1TUB15N	Natural	.062x.094	.55	.28	.37	.047

1TUB2

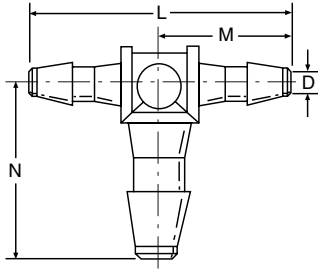
Part Number	Color	Tube I. D.	L	M	N	Flow Diameter D
#						
MN1TUB2W	White	.062x.125	.61	.30	.50	.047
MN1TUB2	Black	.062x.125	.61	.30	.50	.047
MP1TUB2N	Natural	.062x.125	.61	.30	.50	.047

E



TUB - Union Tee

Combination Sizes Continued



15TUB1

Part Number	Color	Tube I. D.	L	M	N	Flow Diameter D
#						
MN15TUB1W	White	.094x.062	.75	.37	.28	.070
MN15TUB1	Black	.094x.062	.75	.37	.28	.070
MP15TUB1N	Natural	.094x.062	.75	.37	.28	.070

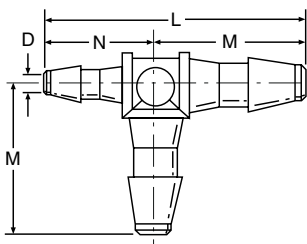
15TUB2

Part Number	Color	Tube I. D.	L	M	N	Flow Diameter D
#						
MN15TUB2W	White	.094x.125	.80	.40	.50	.070
MN15TUB2	Black	.094x.125	.80	.40	.50	.070
MP15TUB2N	Natural	.094x.125	.80	.40	.50	.070

2TUB1

Part Number	Color	Tube I. D.	L	M	N	Flow Diameter D
#						
MN2TUB1W	White	.125x.062	1.00	.50	.30	.047
MN2TUB1	Black	.125x.062	1.00	.50	.30	.047
MP2TUB1N	Natural	.125x.062	1.00	.50	.30	.047

2TUB15



Part Number	Color	Tube I. D.	L	M	N	Flow Diameter D
#						
MN2TUB15W	White	.125x.094	1.00	.50	.40	.070
MN2TUB15	Black	.125x.094	1.00	.50	.40	.070
MP2TUB15N	Natural	.125x.094	1.00	.50	.40	.070



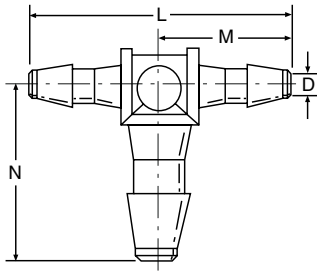
115TUB15

Part Number	Color	Tube I. D.	L	M	N	Flow Diameter D
#						
MN115TUB15W	White	.062x.094	.65	.37	.28	.047
MN115TUB15	Black	.062x.094	.65	.37	.28	.047
MP115TUB15N	Natural	.062x.094	.65	.37	.28	.047



TUB - Union Tee

Combination Sizes Continued



12TUB2

Part Number	Color	Tube I. D.	L	M	N	Flow Diameter D
#						
MN12TUB2W	White	.062x.125	.80	.50	.30	.047
MN12TUB2	Black	.062x.125	.80	.50	.30	.047
MP12TUB2N	Natural	.062x.125	.80	.50	.30	.047



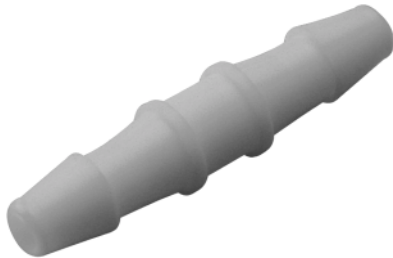
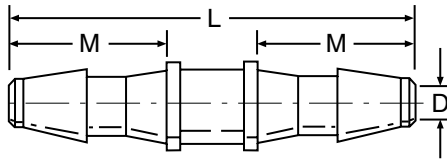
152TUB2

Part Number	Color	Tube I. D.	L	M	N	Flow Diameter D
#						
MN152TUB2W	White	.094x.125	.90	.50	.40	.070
MN152TUB2	Black	.094x.125	.90	.50	.40	.070
MP152TUB2N	Natural	.094x.125	.90	.50	.40	.070

E



UCB - Union



1UCB1

Part Number	Color	Tube I. D.	L	M	Flow Diameter D
#					
MN1UCB1W	White	.062	.50	.19	.047
MN1UCB1	Black	.062	.50	.19	.047
MP1UCB1N	Natural	.062	.50	.19	.047

15UCB15

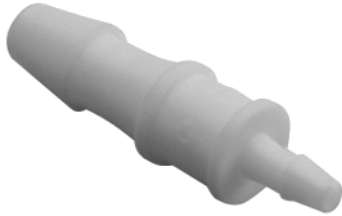
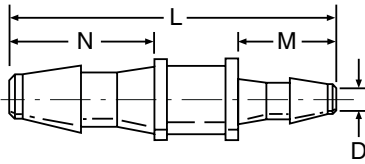
Part Number	Color	Tube I. D.	L	M	Flow Diameter D
#					
MN15UCB15W	White	.094	.75	.29	.070
MN15UCB15	Black	.094	.75	.29	.070
MP15UCB15N	Natural	.094	.75	.29	.070

2UCB2

Part Number	Color	Tube I. D.	L	M	Flow Diameter D
#					
MN2UCB2W	White	.125	1.00	.39	.094
MN2UCB2	Black	.125	1.00	.39	.094
MP2UCB2N	Natural	.125	1.00	.39	.094



UCB - Union Reducers



15UCB1

Part Number	Color	Tube I. D.	L	M	N	Flow Diameter D
#						
MN15UCB1W	White	.094x.062	.65	.19	.29	.047
MN15UCB1	Black	.094x.062	.65	.19	.29	.047
MP15UCB1N	Natural	.094x.062	.65	.19	.29	.047

2UCB15

Part Number	Color	Tube I. D.	L	M	N	Flow Diameter D
#						
MN2UCB15W	White	.125x.094	.90	.29	.39	.070
MN2UCB15	Black	.125x.094	.90	.29	.39	.070
MP2UCB15N	Natural	.125x.094	.90	.29	.39	.070

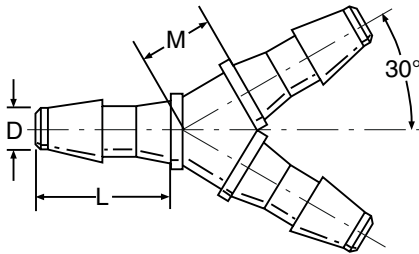
2UCB1

Part Number	Color	Tube I. D.	L	M	N	Flow Diameter D
#						
MN2UCB1W	White	.125x.062	.80	.19	.39	.047
MN2UCB1	Black	.125x.062	.80	.19	.39	.047
MP2UCB1N	Natural	.125x.062	.80	.19	.39	.047





YUB - Y Connector



1YUB

Part Number	Color	Tube I. D.	L	M	Flow Diameter D
#					
MN1YUBW	White	.062	.19	.11	.047
MN1YUB	Black	.062	.19	.11	.047
MP1YUBN	Natural	.062	.19	.11	.047

15YUB

Part Number	Color	Tube I. D.	L	M	Flow Diameter D
#					
MN15YUBW	White	.094	.29	.16	.070
MN15YUB	Black	.094	.29	.16	.070
MP15YUBN	Natural	.094	.29	.16	.070

2YUB

Part Number	Color	Tube I. D.	L	M	Flow Diameter D
#					
MN2YUBW	White	.125	.39	.22	.094
MN2YUB	Black	.125	.39	.22	.094
MP2YUBN	Natural	.125	.39	.22	.094

This is the last page of Section E

CLICK HERE

to go to the first page of Section F