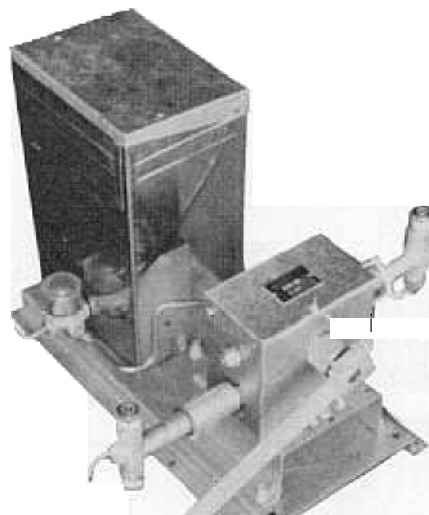


Pump Catalog & Parts list

FRED C. GILBERT CO.
100 E. MINNER AVE. • P. O. BOX 5534
OILDALE, CALIFORNIA
PHONE BAKERSFIELD 399-9569

PUMPS SERIES 1275



BEAM DRIVEN CHEMICAL INJECTORS

MODEL 1275

APPLICATION

The Texsteam Model 1275 Injector has been designed for use on pumping wells with unpacked **annulus** to improve chemical treatment efficiency by incorporating an increased volume of carrier fluid with the injected chemical. This increased volume of treating fluid serves to insure continuity of treatment even with chemical volume of one (1) pint per day or less. This system is especially adaptable to injection of corrosion inhibitors, scale inhibitors and paraffin solvents to prevent down hole production problems.

DESCRIPTION OF PUMPS

The injector is a double head pump with a high volume (flushing) head of constant capacity and an **adjustable** capacity low volume (chemical) head. Since the pump is powered by the stroke of the walking beam, the capacity of the pump is directly related to the speed of the walking beam.

Control of the chemical volume is, for any given plunger size, obtained by selecting the proper position of the TA-290 cotter key so as to adjust the length of the plunger stroke for long or short stroke.

The number of strokes required by the walking beam to complete one pumping cycle of the chemical head is adjusted by positioning the ratchet control TA- 2358 so as to determine the number of ratchet teeth engaged for each stroke of **the lever** TB-168. For exact volumes pumped see Volume Chart.



320 HUGHES ST. — P. O. BOX 9369 — HOUSTON, TEXAS 7701
CABLE ADDRESS: TEXSTEAM

MANUFACTURERS OF:

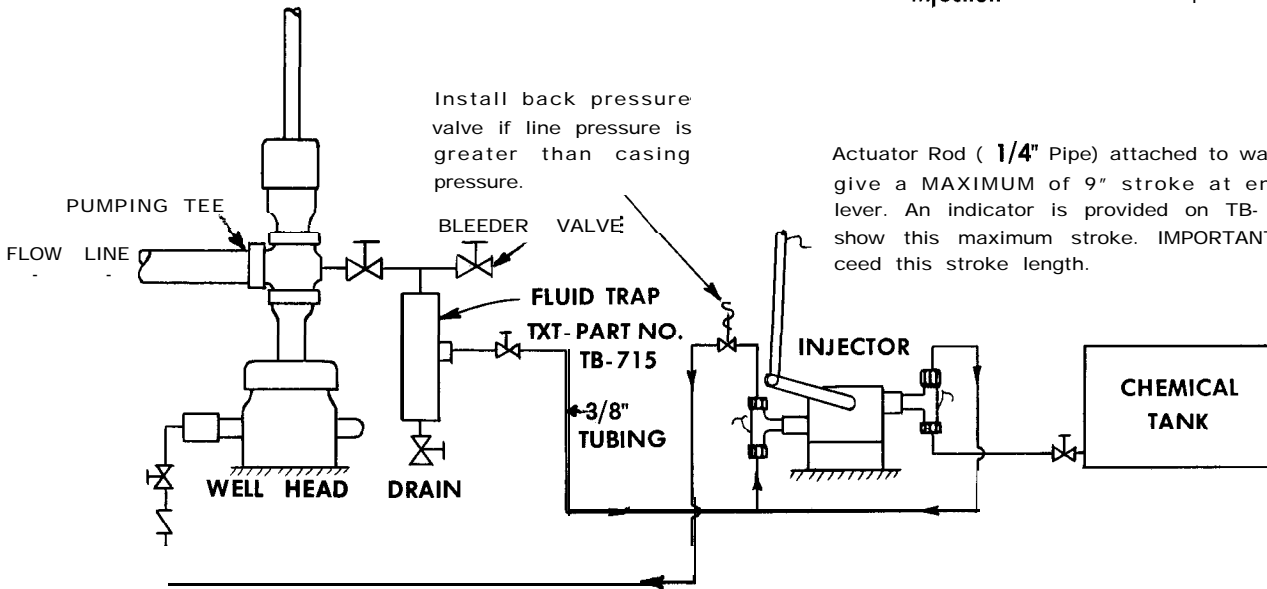
CHEMICAL INJECTORS • PROPORTIONING PUMPS
• SAFETY & RELIEF VALVES • NON-LUBRICATED
PLUG VALVES • GAS REGULATORS • DUMP VALVES
• HOT OIL HEATERS • STEAM GENERATORS FOR
THE INTERNATIONAL OIL PRODUCING INDUSTRY,
PROCESS INDUSTRIES AND GENERAL INDUSTRY

TYPICAL SCHEMATIC HOOK UP

Oil or water, as a flushing fluid, can be **obtained** from any suitable source. A good reliable supply can be had by installing a fluid trap in the pumping tee as shown in the diagram.

At an **adjustable** rate the chemical head injects the chemical into the flushing fluid. This rate is adjustable from a few cubic inches to several quarts per day.

Also as desired, the unit can be hooked up to pump chemical with both heads to "slug" the well, establishing initial concentration, then switched to normal **injection** for continuous operation.

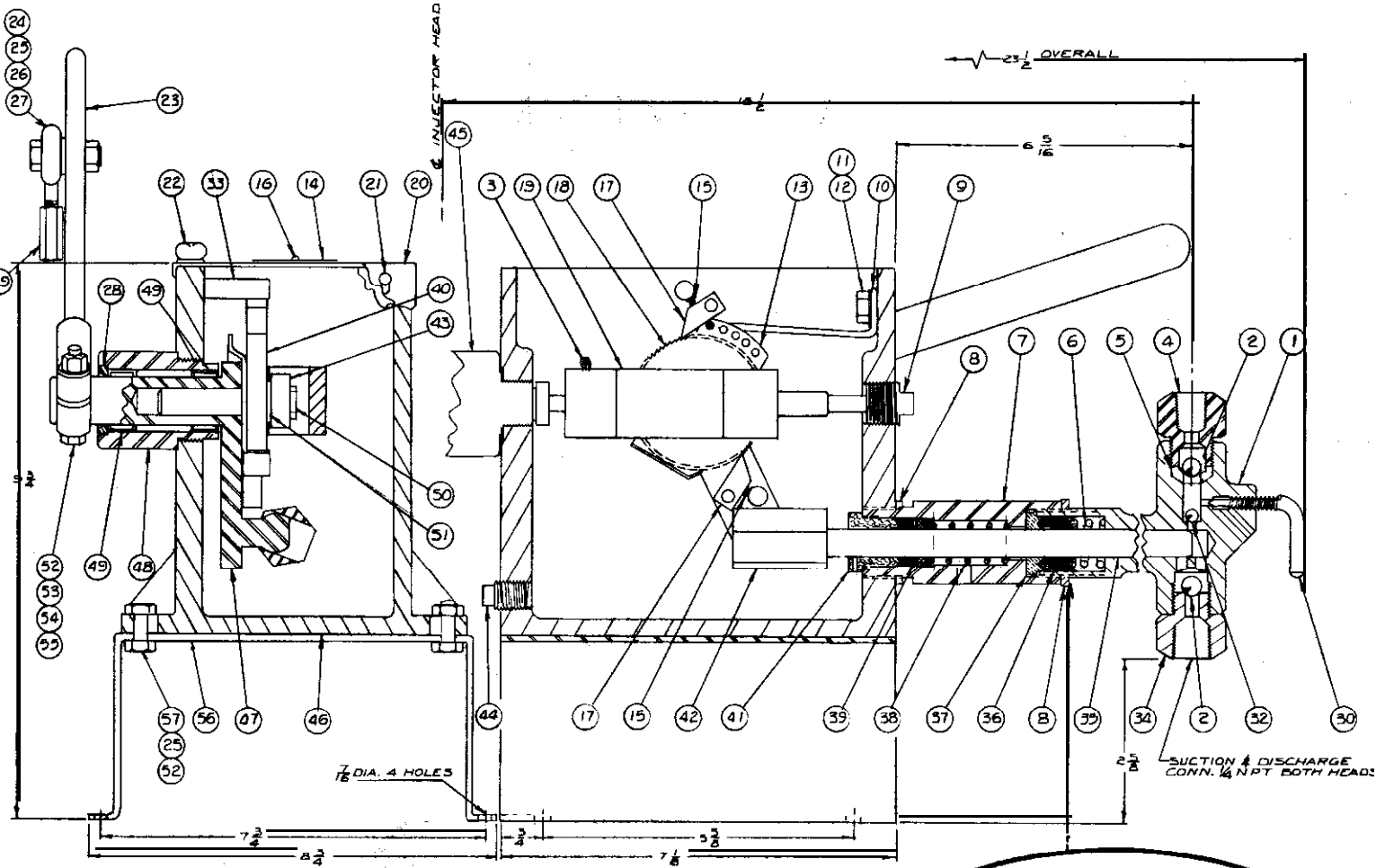


VOLUME PUMPED IN PINTS PER DAY* WITH ONE RATCHET TOOTH ENGAGED

LEVER ACTUATIONS PER MINUTE	1/8" Plunger			1/4" Plunger			3/8" Plunger			1/2" Plunger			VOLUME IN GAL. PER DAY THROUGH FLUSHING HEAD AT S.P.M. INDICATED
	Short	Med.	Long	Short	Med.	Long	Short	Med.	Long	Short	Med.	Long	
1							.023	.042	.062	.041	.074	.111	2.4
4	.010	.018	.027	.041	.018	.111	.092	.166	.249	.164	.295	.443	9.7
6	.015	.027	.042	.061	.111	.166	.138	.249	.374	.246	.443	.664	14.6
8	.020	.037	.055	.082	.147	.221	.184	.332	.498	.327	.591	.886	19.5
10	.025	.046	.069	.102	.186	.277	.230	.415	.623	.409	.738	1.107	24.4
12	.030	.055	.083	.123	.221	.332	.276	.498	.747	.491	.886	1.329	29.3
14	.035	.064	.097	.143	.258	.388	.322	.581	.872	.573	1.034	1.550	34.2
16	.040	.074	.111	.164	.295	.443	.368	.664	.996	.655	1.181	1.772	39.1
18	.045	.083	.124	.184	.332	.498	.414	.747	1.121	.736	1.329	1.993	43.9
	.050	.092	.138	.205	.369	.554	.460	.830	1.246	.819	1.477	2.215	48.8

* MULTIPLY ABOVE FIGURE BY NUMBER OF RATCHET TEETH ENGAGED FOR HIGHER RATES

Short, Medium and Long stroke is adjusted by repositioning TA290 Cotter Pin (see item #3 opposite page).



PARTS LIST

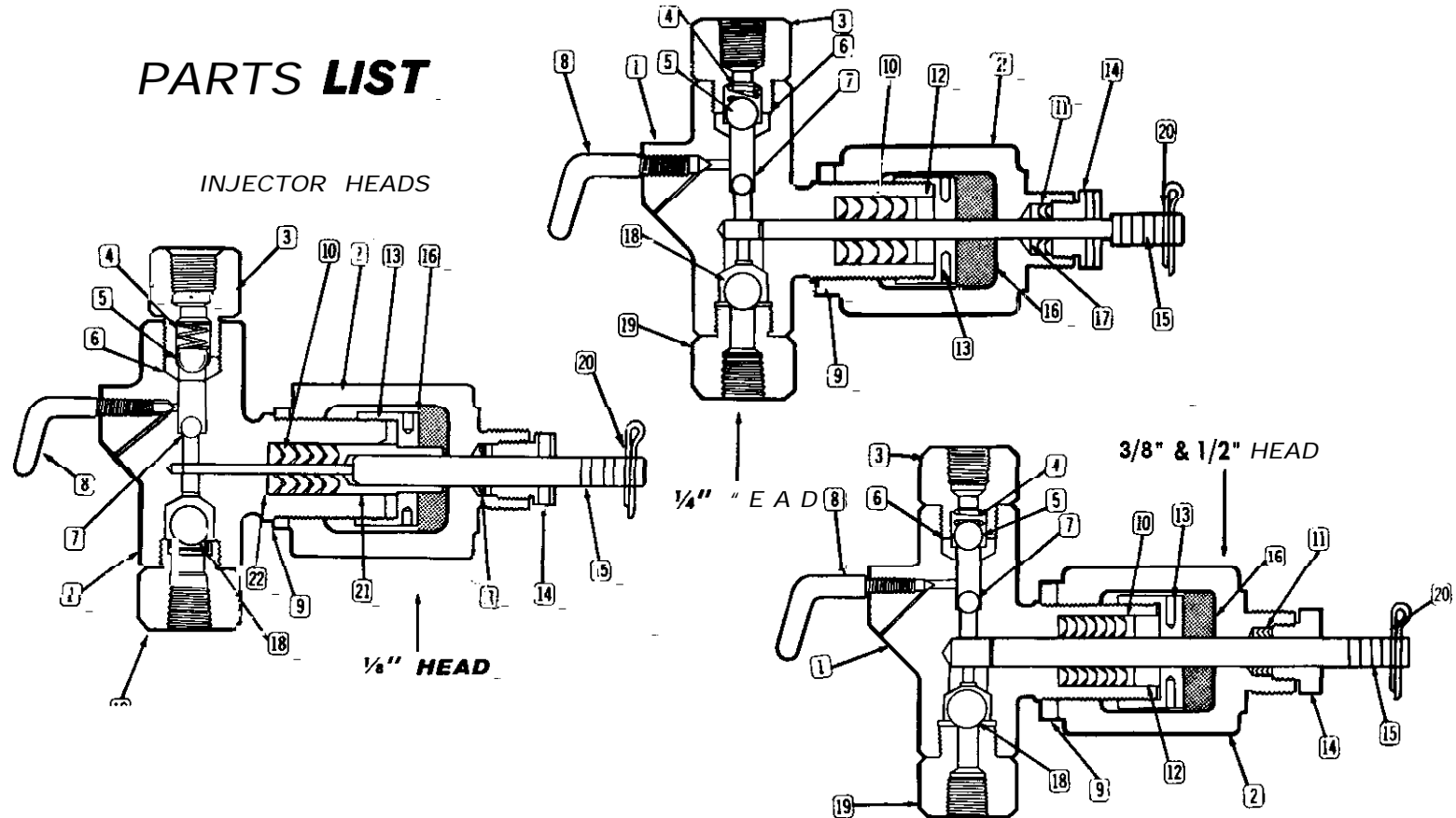
ITEM	PART NO.	NO. REQD	NAME	MATERIAL
1	TC210	1	HEAD	
2	TA54	2	BALL	
3	TA290	1	COTTER PIN	
4	TB707	1	DISCHARGE BUSHING	
5	TB588	1	SEAT	
6	TA2356	1	SPRING	
7	TB184	1	PACKING CYLINDER	
8	TA225	2	LOCK NUT	
9	TA434	1	GUIDE PLUG	
10	TA2357	1	RATCHET CONTROL LATCH	
11		1	BOLT 1/4-20 x 1/2 HEX HD CAP SCR	
12	TA167	1	WASHER	
13	TA2358	1	RATCHET CONTROL	
14	TA172	1	NAME PLATE	
15	TA456	2	CHECK PAWL SPRINGS	
16	TA171	2	ESCHUTCHEON PIN	
17	TA455	2	CHECK PAWL	
18	TA537	1	RATCHET ASSEMBLY	
19	TA2416	1	CROSS HEAD	
20	TA960	1	LID	
21	TA528	2	RIVET	
22		1	1/4-20 x 1/2 THUMB SCREW	
23	TB168	1	LEVER	
24	TA139	1	CAP SCREW	
25	TA300	3	WASHER	
26	TA2207	1	HEX NUT	
27	TA2403	1	ROD END	
28	TA2404	1	OIL SEAL	
29	TA2359	1	COUPLING	
30	TA1497	1	PRIMING VALVE STEM	
31	TA315	1	GLAND WRENCH	
32	TA126	1	BALL	
33	TA2415	1	CHECK PAWL SPRING SHAFT	
34	TB597	1	SUCTION BUSHING	
35	TA2360	1	PLUNGER	
36	TA2361	1	PACKING	
37	TA2362	1	PACKING TOP ADAPTOR	
38	TA2363	1	OIL SEAL SPRING	
39	TA2364	1	OIL SEAL	
40	TA420	1	RATCHET WHEEL	
41	TA2366	1	PACKING GLAND	
42	TA2367	1	PIVOT	
43	TA457	1	BEARING - CROSS HEAD	
44	TA138	1	DRAIN PLUG	
45		1	SEE TABULATION on back page	
46	TB692	1	HOUSING	
47	TB185	1	DRIVE SHAFT ASSY.	
48	TA2368	1	SHAFT HOUSING	
49	TA2406	2	BEARING	
50	TA433	1	BOLT	
51	TA458	1	WASHER	
52	TA144	3	NUT	
53	TA424	1	LEVER BOLT	
54	TA425	1	LOCK WASHER	
55	TA2408	1	KEY	
56	TB188	1	BASE	
57	TA143	2	CAP SCREW	
58				
59				
60				

SUB PARTS OF ITEM 18-TA537-RATCHET-ASSEMBLY

OPTIONAL EQUIPMENT TA2449 BEAM CLAMP ASSEMBLY

PARTS LIST

INJECTOR HEADS



ITEM NO.	PLUNGER SIZE	MATERIAL SPECIFICATIONS	1/8"	1/4"	3/8"	1/2"
			Ductile w/Stnls Trim	Ductile w/Stnls Trim	Ductile w/Stnls Trim	Ductile w/Stnls Trim
▼	HEAD ASSEMBLY NO.		TB-478	TB-708	TB-330	TB-331
1	Injector Body		TC-277	TC-209	TC-209	TC-210
2	Yoke		TA-1457	TA-1457	TA-1457	TA-550
3	Top Bushing		TA-1496	TA-1496	TA-1496	TA-1496
4	Ball Check Spring		TA-77	TA-77	TA-77	TA-77
5	Large Top Ball - 3/8"		TA-54	TA-54	TA-54	TA-54
6	Top Seat		TB-588	TB-588	TA-806	TA-806
7	Small Top Ball - 1/4"		TA-126	TA-126	TA-126	TA-126
8	Priming Valve		TA-1497	TA-1497	TA-1497	TA-1497
9	Lock Nut		TA-225	TA-225	TA-225	TA-225
10	Plunger Packing Set		TA-1342	TA-1461	TA-1456	TA-959
11	Yoke Packing Set		TA-541	TA-544	TA-541	TA-553
12	Packing Gland			TA-1463	TA-957	TA-1219
13	Packing Gland Nut		TA-1220	TA-1220	TA-1220	TA-1220
14	Packing Nut		TA-810	TA-842	TA-810	TA-549
15	Plunger		TA-1343	TA-1464	TA-1460	TA-830
16	Wiper		TA-782	TA-781	TA-780	TA-782
17	Packing Spacer			TA-841		
18	Bottom Ball		TA-54	TA-54	TA-53	TA-53
19	Bottom Bushing		TB-597	TB-597	TA-771	TA-771
	Plunger Pin		TA-290	TA-290	TA-290	TA-290
21	Plunger Guide		TA-1338	TA-1566		
22	Bottom Adapter		TA-1339			

